

PPIG Rabbit Polyclonal Antibody



CAB0429

Product Information

Size:

20uL, 50uL, 100uL, 200uL

Observed MW:

110kDa

Calculated MW:

40kDa/88kDa

Applications:

WB

Reactivity:

Human

Antibody Information

Recommended dilutions:

WB 1:500 - 1:2000

Source:

Rabbit

Isotype:

IgG

Purification:

Affinity purification

Protein Background

Immunogen information

Gene ID:

9360

Uniprot

Q13427

Synonyms:

PPIG; CARS-Cyp; CYP; SCAF10; SRCyp

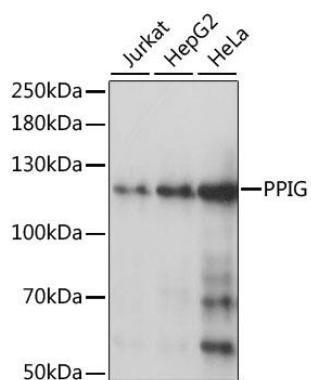
Immunogen:

A synthetic peptide corresponding to a sequence within amino acids 1-100 of human PPIG (NP_004783.2).

Storage:

Store at -20°C. Avoid freeze / thaw cycles. Buffer: PBS with 0.02% sodium azide, 50% glycerol, pH7.3.

Product Images



Western blot analysis of extracts of various cell lines, using PPIG antibody (CAB0429) at 1:1000 dilution. Secondary antibody: HRP Goat Anti-Rabbit IgG (H+L) (CABS014) at 1:10000 dilution. Lysates/proteins: 25ug per lane. Blocking buffer: 3% nonfat dry milk in TBST. Detection: ECL Basic Kit (CABM00020). Exposure time: 3s.