

# N-Cadherin Rabbit Polyclonal Antibody



CAB0433

## Product Information

### Size:

20uL, 50uL, 100uL, 200uL

### Observed MW:

140kDa

### Calculated MW:

97kDa/99kDa

### Applications:

WB IHC

### Reactivity:

Human, Mouse, Rat

## Protein Background

This gene encodes a classical cadherin and member of the cadherin superfamily. Alternative splicing results in multiple transcript variants, at least one of which encodes a preproprotein is proteolytically processed to generate a calcium-dependent cell adhesion molecule and glycoprotein. This protein plays a role in the establishment of left-right asymmetry, development of the nervous system and the formation of cartilage and bone.

## Immunogen information

### Gene ID:

1000

### Uniprot

P19022

### Synonyms:

CD325; CDHN; CDw325; NCAD; N Cadherin; CDH2

## Antibody Information

### Recommended dilutions:

WB 1:500 - 1:2000 IHC 1:50  
- 1:100

### Source:

Rabbit

### Isotype:

IgG

### Purification:

Affinity purification

### Immunogen:

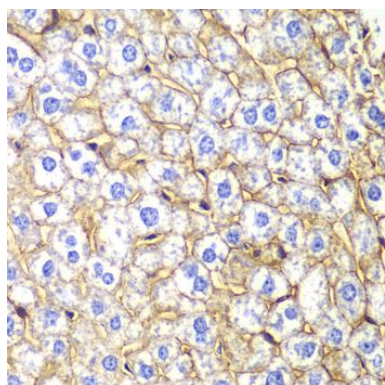
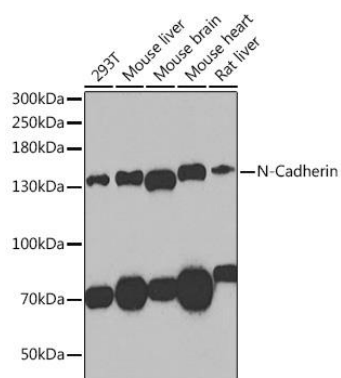
A synthetic peptide corresponding to a sequence within amino acids 750-850 of human N-Cadherin (NP\_001783.2).

### Storage:

Store at -20°C. Avoid freeze / thaw cycles. Buffer: PBS with 0.02% sodium azide, 50% glycerol, pH7.3.

## Product Images

---



Western blot analysis of extracts of various cell lines, using N-Cadherin antibody (CAB0433) at 1:1000 dilution. Secondary antibody: HRP Goat Anti-Rabbit IgG (H+L) (CABS014) at 1:10000 dilution. Lysates/proteins: 25ug per lane. Blocking buffer: 3% nonfat dry milk in TBST. Detection: ECL Basic Kit (CABM00020). Exposure time: 90s.

Immunohistochemistry of paraffin-embedded mouse liver using N-Cadherin Antibody (CAB0433) at dilution of 1:100 (40x lens).