

MCL1 Rabbit Polyclonal Antibody



CAB0434

Product Information

Size:

20uL, 50uL, 100uL, 200uL

Observed MW:

40kDa

Calculated MW:

28kDa/37kDa

Applications:

WB IHC IF

Reactivity:

Human, Mouse, Rat

Antibody Information

Recommended dilutions:

WB 1:500 - 1:1000 IHC 1:50
- 1:100 IF 1:50 - 1:100

Source:

Rabbit

Isotype:

IgG

Purification:

Affinity purification

Protein Background

This gene encodes an anti-apoptotic protein, which is a member of the Bcl-2 family. Alternative splicing results in multiple transcript variants. The longest gene product (isoform 1) enhances cell survival by inhibiting apoptosis while the alternatively spliced shorter gene products (isoform 2 and isoform 3) promote apoptosis and are death-inducing.

Immunogen information

Gene ID:

4170

Uniprot

Q07820

Synonyms:

MCL1; BCL2L3; EAT; MCL1-ES; MCL1L; MCL1S; Mcl-1; TM; bcl2-L-3;
mcl1/EAT; MCL1

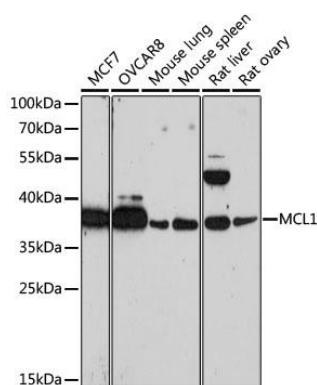
Immunogen:

A synthetic peptide of human MCL1

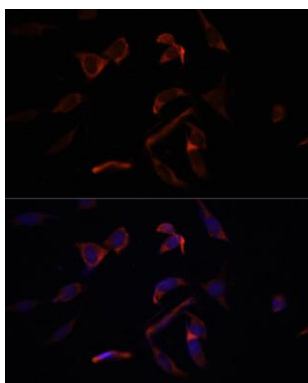
Storage:

Store at -20°C. Avoid freeze / thaw cycles. Buffer: PBS with 0.02% sodium azide, 50% glycerol, pH7.3.

Product Images



Western blot analysis of extracts of various cell lines, using MCL1 antibody (CAB0434) at 1:1000 dilution. Secondary antibody: HRP Goat Anti-Rabbit IgG (H+L) (CABS014) at 1:10000 dilution. Lysates/proteins: 25ug per lane. Blocking buffer: 3% nonfat dry milk in TBST. Detection: ECL Basic Kit (CABM00020). Exposure time: 300s.



Immunofluorescence analysis of NIH-3T3 cells using MCL1 Polyclonal Antibody (CAB0434) at dilution of 1:100 (40x lens). Blue: DAPI for nuclear staining.