

p70 S6 kinase Rabbit Polyclonal Antibody



CAB0447

Product Information

Size:

20uL, 50uL, 100uL, 200uL

Observed MW:

Calculated MW:

51kDa/52kDa/56kDa/59kDa

Applications:

IHC

Reactivity:

Rat

Antibody Information

Recommended dilutions:

IHC 1:50 - 1:100

Source:

Rabbit

Isotype:

IgG

Purification:

Affinity purification

Protein Background

This gene encodes a member of the ribosomal S6 kinase family of serine/threonine kinases. The encoded protein responds to mTOR (mammalian target of rapamycin) signaling to promote protein synthesis, cell growth, and cell proliferation. Activity of this gene has been associated with human cancer. Alternatively spliced transcript variants have been observed. The use of alternative translation start sites results in isoforms with longer or shorter N-termini which may differ in their subcellular localizations. There are two pseudogenes for this gene on chromosome 17.

Immunogen information

Gene ID:

6198

Uniprot

P23443

Synonyms:

PS6K; S6K; S6K-beta-1; S6K1; STK14A; p70 S6KA; p70(S6K)-alpha; p70-S6K; p70-alpha; P70 S6K; RPS6KB1; p70S6KA

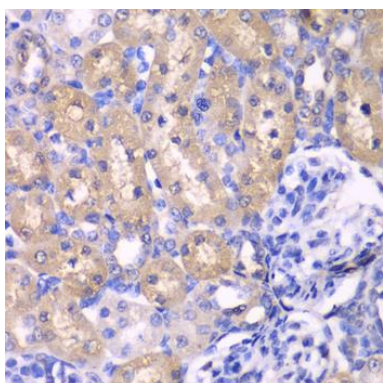
Immunogen:

Recombinant fusion protein containing a sequence corresponding to amino acids 1-352 of human RPS6KB1 (NP_003152.1).

Storage:

Store at -20°C. Avoid freeze / thaw cycles. Buffer: PBS with 0.02% sodium azide, 50% glycerol, pH7.3.

Product Images



Immunohistochemistry of paraffin-embedded rat kidney using p70 S6 kinase antibody (CAB0447) at dilution of 1:100 (40x lens).