

PKCdelta Rabbit Polyclonal Antibody



CAB0471

Product Information

Size:

20uL, 50uL, 100uL, 200uL

Observed MW:

78kDa/85kDa

Calculated MW:

77kDa/80kDa

Applications:

WB IHC IF

Reactivity:

Human, Mouse, Rat

Protein Background

Protein kinase C (PKC) is a family of serine- and threonine-specific protein kinases that can be activated by calcium and the second messenger diacylglycerol. PKC family members phosphorylate a wide variety of protein targets and are known to be involved in diverse cellular signaling pathways. PKC family members also serve as major receptors for phorbol esters, a class of tumor promoters. Each member of the PKC family has a specific expression profile and is believed to play distinct roles in cells. The protein encoded by this gene is one of the PKC family members. Studies both in human and mice demonstrate that this kinase is involved in B cell signaling and in the regulation of growth, apoptosis, and differentiation of a variety of cell types. Alternatively spliced transcript variants encoding the same protein have been observed.

Immunogen information

Gene ID:

5580

Uniprot

Q05655

Antibody Information

Recommended dilutions:

WB 1:500 - 1:2000 IHC 1:50
- 1:100 IF 1:50 - 1:100

Source:

Rabbit

Isotype:

IgG

Purification:

Affinity purification

Synonyms:

PRKCD; ALPS3; CVID9; MAY1; PKCD; nPKC-delta; PKCDelta

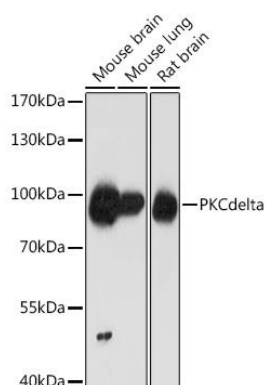
Immunogen:

Recombinant fusion protein containing a sequence corresponding to amino acids 477-676 of human PKCdelta (NP_997704.1).

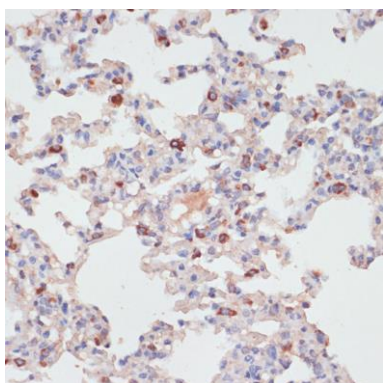
Storage:

Store at -20°C. Avoid freeze / thaw cycles. Buffer: PBS with 0.02% sodium azide, 50% glycerol, pH7.3.

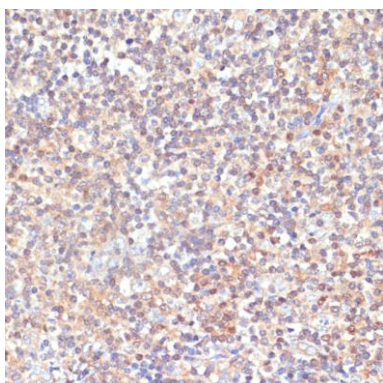
Product Images



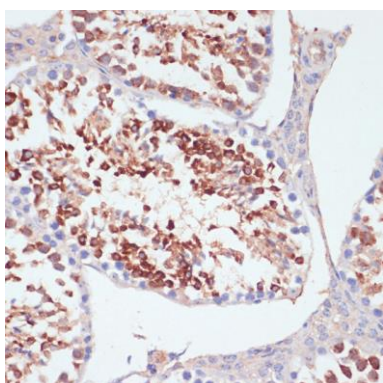
Western blot analysis of extracts of various cell lines, using PKCdelta antibody (CAB0471) at 1:1000 dilution. Secondary antibody: HRP Goat Anti-Rabbit IgG (H+L) (CABS014) at 1:10000 dilution. Lysates/proteins: 25ug per lane. Blocking buffer: 3% nonfat dry milk in TBST. Detection: ECL Basic Kit (CABM00020). Exposure time: 1min.



Immunohistochemistry of paraffin-embedded rat lung using PKCdelta antibody (CAB0471) at dilution of 1:100 (40x lens).



Immunohistochemistry of paraffin-embedded human tonsil using PKCdelta antibody (CAB0471) at dilution of 1:100 (40x lens).



Immunohistochemistry of paraffin-embedded mouse testis using PKC delta antibody (CAB0471) at dilution of 1:100 (40x lens).