

# GATA1 Rabbit Polyclonal Antibody



CAB0475

---

## Product Information

### Size:

50uL, 100uL, 200uL

### Observed MW:

50kDa

### Calculated MW:

34kDa/35kDa/42kDa

### Applications:

WB IHC IF

### Reactivity:

Human, Mouse, Rat

## Protein Background

This gene encodes a protein which belongs to the GATA family of transcription factors. The protein plays an important role in erythroid development by regulating the switch of fetal hemoglobin to adult hemoglobin. Mutations in this gene have been associated with X-linked dyserythropoietic anemia and thrombocytopenia.

## Immunogen information

### Gene ID:

2623

### Uniprot

P15976

### Synonyms:

GATA1; ERYF1; GATA-1; GF-1; GF1; NF-E1; NFE1; XLANP; XLTDA; XLTT

## Antibody Information

### Recommended dilutions:

WB 1:500 - 1:2000 IHC 1:50  
- 1:200 IF 1:50 - 1:100

### Source:

Rabbit

### Isotype:

IgG

### Purification:

Affinity purification

### Immunogen:

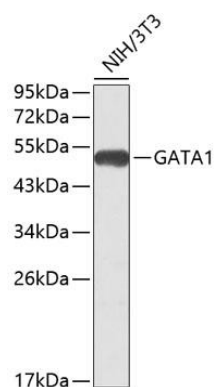
A synthetic peptide of human GATA1

### Storage:

Store at -20°C. Avoid freeze / thaw cycles. Buffer: PBS with 0.02% sodium azide, 50% glycerol, pH7.3.

## Product Images

---



Western blot analysis of extracts of NIH/3T3 cells, using GATA1 antibody (CAB0475). Secondary antibody: HRP Goat Anti-Rabbit IgG (H+L) (CABS014) at 1:10000 dilution. Lysates/proteins: 25ug per lane. Blocking buffer: 3% nonfat dry milk in TBST.