

TSC2 Rabbit Polyclonal Antibody



CAB0492

Product Information

Size:

20uL, 50uL, 100uL, 200uL

Observed MW:

200kDa

Calculated MW:

25kDa/187-200kDa

Applications:

WB IHC IF

Reactivity:

Human, Mouse, Rat

Protein Background

Mutations in this gene lead to tuberous sclerosis complex. Its gene product is believed to be a tumor suppressor and is able to stimulate specific GTPases. The protein associates with hamartin in a cytosolic complex, possibly acting as a chaperone for hamartin. Alternative splicing results in multiple transcript variants encoding different isoforms.

Immunogen information

Gene ID:

7249

Uniprot

P49815

Synonyms:

LAM; PPP1R160; TSC4; TSC2; Tuberin; tuberin

Antibody Information

Recommended dilutions:

WB 1:500 - 1:2000 IHC 1:50
- 1:200 IF 1:50 - 1:200

Source:

Rabbit

Isotype:

IgG

Purification:

Affinity purification

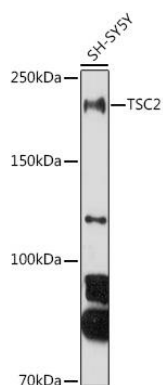
Immunogen:

Recombinant fusion protein containing a sequence corresponding to amino acids 900-1150 of human TSC2 (NP_000539.2).

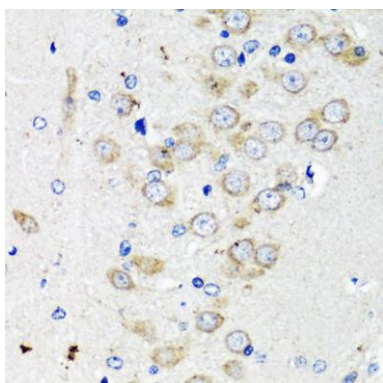
Storage:

Store at -20°C. Avoid freeze / thaw cycles. Buffer: PBS with 0.02% sodium azide, 50% glycerol, pH7.3.

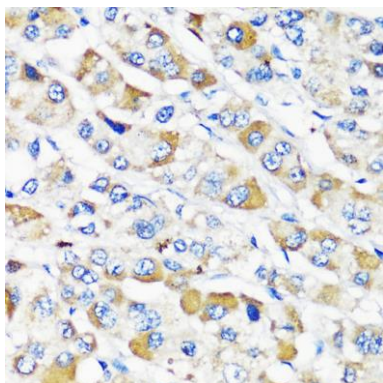
Product Images



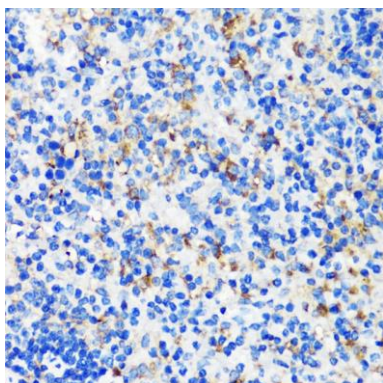
Western blot analysis of extracts of SH-SY5Y cells, using TSC2 antibody (CAB0492) at 1:1000 dilution. Secondary antibody: HRP Goat Anti-Rabbit IgG (H+L) (CABS014) at 1:10000 dilution. Lysates/proteins: 25ug per lane. Blocking buffer: 3% nonfat dry milk in TBST. Detection: ECL Basic Kit (CABM00020). Exposure time: 180s.



Immunohistochemistry of paraffin-embedded rat brain using TSC2 antibody (CAB0492) at dilution of 1:200 (40x lens).



Immunohistochemistry of paraffin-embedded human liver cancer using TSC2 antibody (CAB0492) at dilution of 1:200 (40x lens).



Immunohistochemistry of paraffin-embedded mouse spleen using TSC2 antibody (CAB0492) at dilution of 1:200 (40x lens).