

DNM2 Rabbit Polyclonal Antibody



CAB0523

Product Information

Size:

20uL, 50uL, 100uL, 200uL

Observed MW:

110kDa

Calculated MW:

97kDa/98kDa

Applications:

WB IHC

Reactivity:

Human, Mouse, Rat

Protein Background

Dynamins represent one of the subfamilies of GTP-binding proteins. These proteins share considerable sequence similarity over the N-terminal portion of the molecule, which contains the GTPase domain. Dynamins are associated with microtubules. They have been implicated in cell processes such as endocytosis and cell motility, and in alterations of the membrane that accompany certain activities such as bone resorption by osteoclasts. Dynamins bind many proteins that bind actin and other cytoskeletal proteins. Dynamins can also self-assemble, a process that stimulates GTPase activity. Five alternatively spliced transcripts encoding different proteins have been described. Additional alternatively spliced transcripts may exist, but their full-length nature has not been determined.

Immunogen information

Gene ID:

1785

Uniprot

P50570

Antibody Information

Recommended dilutions:

WB 1:500 - 1:2000 IHC 1:50
- 1:200

Source:

Rabbit

Synonyms:

DNM2; CMT2M; CMTDI1; CMTDIB; DI-CMTB; DYN2; DYNII; LCCS5;
dynamin-2

Immunogen:

A synthetic peptide of human DNM2

Isotype:

IgG

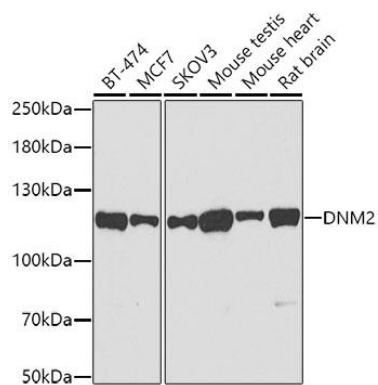
Storage:

Store at -20°C. Avoid freeze / thaw cycles. Buffer: PBS with 0.02%
sodium azide, 50% glycerol, pH7.3.

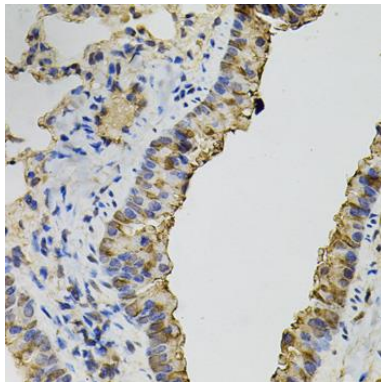
Purification:

Affinity purification

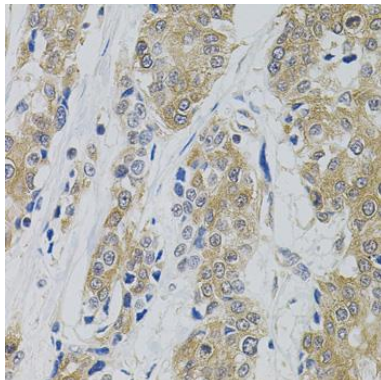
Product Images



Western blot analysis of extracts of various cell lines, using DNM2 antibody (CAB0523) at 1:500 dilution. Secondary antibody: HRP Goat Anti-Rabbit IgG (H+L) (CABS014) at 1:10000 dilution. Lysates/proteins: 25ug per lane. Blocking buffer: 3% nonfat dry milk in TBST. Detection: ECL Basic Kit (CABM00020). Exposure time: 90s.



Immunohistochemistry of paraffin-embedded mouse lung using DNM2 antibody (CAB0523) (40x lens).



Immunohistochemistry of paraffin-embedded human prostate cancer using DNM2 antibody (CAB0523) (40x lens).