

# [KO Validated] HK1 Rabbit Monoclonal Antibody



CAB0533

## Product Information

### Size:

20uL, 50uL, 100uL, 200uL

### Observed MW:

120KDa

### Calculated MW:

102kDa

### Applications:

WB IHC IF

### Reactivity:

Human, Mouse, Rat

## Protein Background

Hexokinases phosphorylate glucose to produce glucose-6-phosphate, the first step in most glucose metabolism pathways. This gene encodes a ubiquitous form of hexokinase which localizes to the outer membrane of mitochondria. Mutations in this gene have been associated with hemolytic anemia due to hexokinase deficiency. Alternative splicing of this gene results in several transcript variants which encode different isoforms, some of which are tissue-specific. [provided by RefSeq, Apr 2016]

## Immunogen information

### Gene ID:

3098

### Uniprot

P19367

### Synonyms:

HK; HK1-ta; HK1-tb; HK1-tc; HKD; HKI; HMSNR; HXK1; hexokinase

## Antibody Information

### Recommended dilutions:

WB 1:500 - 1:2000 IHC 1:50  
- 1:200 IF 1:50 - 1:200

### Source:

Rabbit

### Isotype:

IgG

### Purification:

Affinity purification

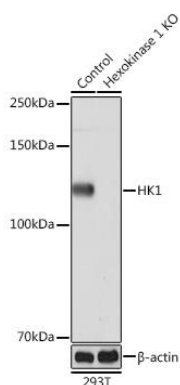
### Immunogen:

A synthesized peptide derived from human Hexokinase 1

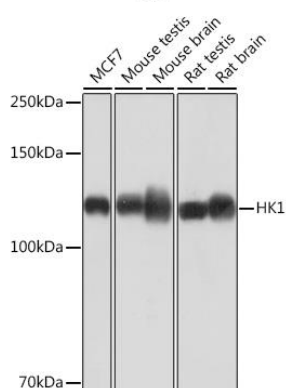
### Storage:

Store at -20°C. Avoid freeze / thaw cycles. Buffer: PBS with 0.02% sodium azide, 0.05% BSA, 50% glycerol, pH7.3.

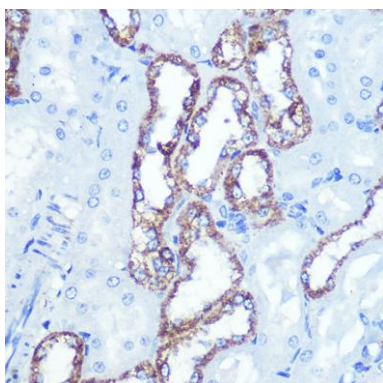
## Product Images



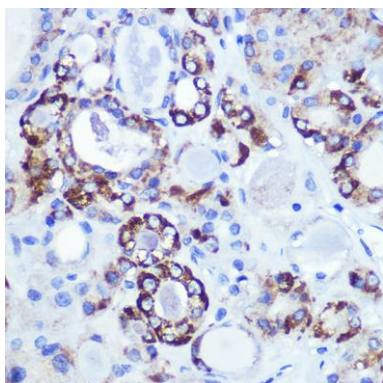
Western blot analysis of extracts from normal (control) and HK1 knockout (KO) 293T cells, using HK1 Rabbit mAb (CAB0533) at 1:1000 dilution. Secondary antibody: HRP Goat Anti-Rabbit IgG (H+L) (CABS014) at 1:10000 dilution. Lysates/proteins: 25ug per lane. Blocking buffer: 3% nonfat dry milk in TBST. Detection: ECL Basic Kit (CABM00020). Exposure time: 60s.



Western blot analysis of extracts of various cell lines, using HK1 Rabbit mAb (CAB0533) at 1:1000 dilution. Secondary antibody: HRP Goat Anti-Rabbit IgG (H+L) (CABS014) at 1:10000 dilution. Lysates/proteins: 25ug per lane. Blocking buffer: 3% nonfat dry milk in TBST. Detection: ECL Basic Kit (CABM00020). Exposure time: 60s.



Immunohistochemistry of paraffin-embedded rat kidney using HK1 Rabbit mAb (CAB0533) at dilution of 1:100 (40x lens).



Immunohistochemistry of paraffin-embedded human thyroid cancer using HK1 Rabbit mAb (CAB0533) at dilution of 1:100 (40x lens).