

# RIG-I / DDX58 Rabbit Polyclonal Antibody



CAB0550

## Product Information

### Size:

20uL, 50uL, 100uL, 200uL

### Observed MW:

109kDa

### Calculated MW:

101kDa/106kDa

### Applications:

WB IHC IF IP

### Reactivity:

Human, Mouse

## Protein Background

DEAD box proteins, characterized by the conserved motif Asp-Glu-Ala-Asp (DEAD), are putative RNA helicases which are implicated in a number of cellular processes involving RNA binding and alteration of RNA secondary structure. This gene encodes a protein containing RNA helicase-DEAD box protein motifs and a caspase recruitment domain (CARD). It is involved in viral double-stranded (ds) RNA recognition and the regulation of immune response.

## Immunogen information

### Gene ID:

23586

### Uniprot

O95786

### Synonyms:

DDX58; RIG-I; RIGI; RLR-1; SGMRT2

## Antibody Information

### Recommended dilutions:

WB 1:500 - 1:2000 IHC 1:50  
- 1:200 IF 1:20 - 1:100 IP  
1:20 - 1:100

### Source:

Rabbit

### Isotype:

IgG

### Purification:

Affinity purification

### Immunogen:

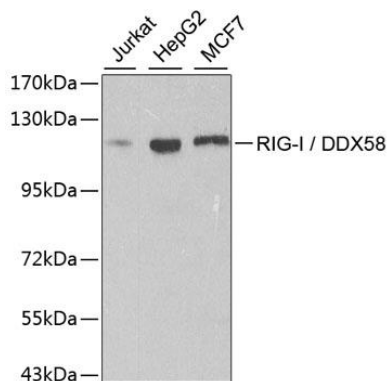
A synthetic peptide corresponding to a sequence within amino acids 830 to the C-terminus of human RIG-I / DDX58 (NP\_055129.2).

### Storage:

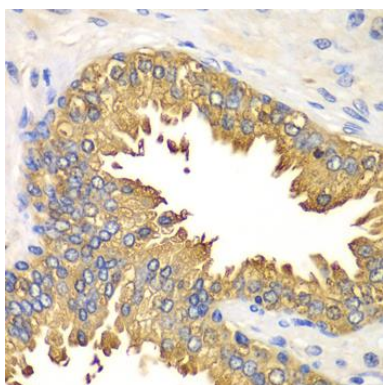
Store at -20°C. Avoid freeze / thaw cycles. Buffer: PBS with 0.02% sodium azide, 50% glycerol, pH7.3.

## Product Images

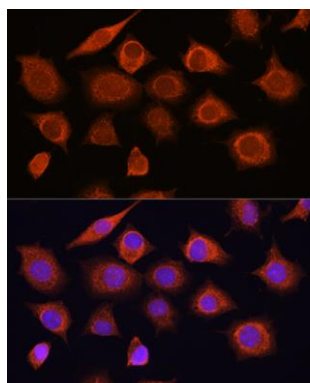
---



Western blot analysis of extracts of various cell lines, using RIG-I / DDX58 antibody (CAB0550) at 1:500 dilution. Secondary antibody: HRP Goat Anti-Rabbit IgG (H+L) (CABS014) at 1:10000 dilution. Lysates/proteins: 25ug per lane. Blocking buffer: 3% nonfat dry milk in TBST. Detection: ECL Basic Kit (CABM00020).



Immunohistochemistry of paraffin-embedded human prostate using RIG-I / DDX58 antibody (CAB0550) at dilution of 1:100 (40x lens).



Immunofluorescence analysis of L929 cells using RIG-I / DDX58 Rabbit pAb (CAB0550) at dilution of 1:100. Blue: DAPI for nuclear staining.