

NEDD4 Rabbit Polyclonal Antibody



CAB0552

Product Information

Size:

20uL, 50uL, 100uL, 200uL

Observed MW:

120kDa

Calculated MW:

104kDa/140kDa/147kDa/149kDa

Applications:

WB IHC

Reactivity:

Human

Antibody Information

Recommended dilutions:

WB 1:500 - 1:2000 IHC 1:50 - 1:200

Source:

Rabbit

Isotype:

IgG

Purification:

Affinity purification

Protein Background

This gene is the founding member of the NEDD4 family of HECT ubiquitin ligases that function in the ubiquitin proteasome system of protein degradation. The encoded protein contains an N-terminal calcium and phospholipid binding C2 domain followed by multiple tryptophan-rich WW domains and, a C-terminal HECT ubiquitin ligase catalytic domain. It plays critical role in the regulation of a number of membrane receptors, endocytic machinery components and the tumor suppressor PTEN.

Immunogen information

Gene ID:

4734

Uniprot

P46934

Synonyms:

NEDD4; NEDD4-1; RPF1

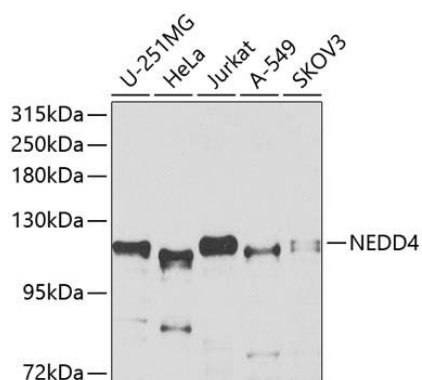
Immunogen:

Recombinant fusion protein containing a sequence corresponding to amino acids 160-460 of human NEDD4 (NP_940682.2).

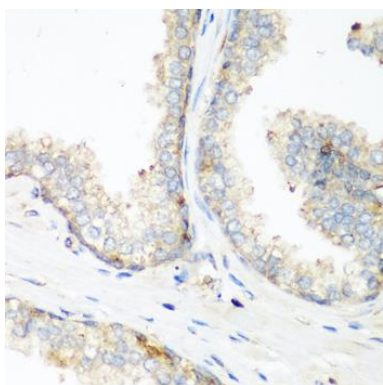
Storage:

Store at -20°C. Avoid freeze / thaw cycles. Buffer: PBS with 0.02% sodium azide, 50% glycerol, pH7.3.

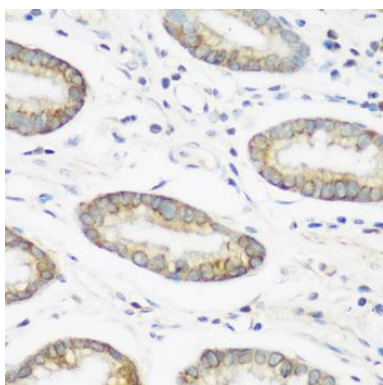
Product Images



Western blot analysis of extracts of various cell lines, using NEDD4 antibody (CAB0552) at 1:1000 dilution. Secondary antibody: HRP Goat Anti-Rabbit IgG (H+L) (CABS014) at 1:10000 dilution. Lysates/proteins: 25ug per lane. Blocking buffer: 3% nonfat dry milk in TBST. Detection: ECL Enhanced Kit (CABM00021). Exposure time: 30s.



Immunohistochemistry of paraffin-embedded human prostate using NEDD4 antibody (CAB0552) at dilution of 1:200 (40x lens).



Immunohistochemistry of paraffin-embedded human gastric using NEDD4 antibody (CAB0552) at dilution of 1:200 (40x lens).