

HSPA9 Rabbit Polyclonal Antibody



CAB0558

Product Information

Size:

20uL, 50uL, 100uL, 200uL

Observed MW:

80kDa

Calculated MW:

73kDa

Applications:

WB IHC IF

Reactivity:

Human, Mouse, Rat

Protein Background

This gene encodes a member of the heat shock protein 70 gene family. The encoded protein is primarily localized to the mitochondria but is also found in the endoplasmic reticulum, plasma membrane and cytoplasmic vesicles. This protein is a heat-shock cognate protein. This protein plays a role in cell proliferation, stress response and maintenance of the mitochondria. A pseudogene of this gene is found on chromosome 2.

Immunogen information

Gene ID:

3313

Uniprot

P38646

Synonyms:

HSPA9; CRP40; CSA; EVPLS; GRP-75; GRP75; HEL-S-124m; HSPA9B; MOT; MOT2; MTHSP75; PBP74; SAAN; SIDBA4

Antibody Information

Recommended dilutions:

WB 1:500 - 1:2000 IHC 1:50
- 1:200 IF 1:50 - 1:200

Source:

Rabbit

Isotype:

IgG

Purification:

Affinity purification

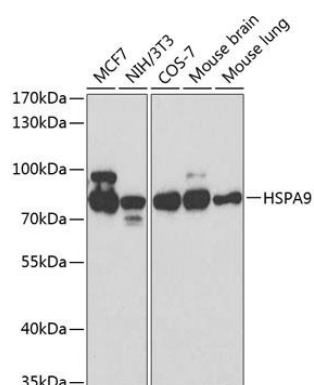
Immunogen:

Recombinant fusion protein containing a sequence corresponding to amino acids 380-679 of human HSPA9 (NP_004125.3).

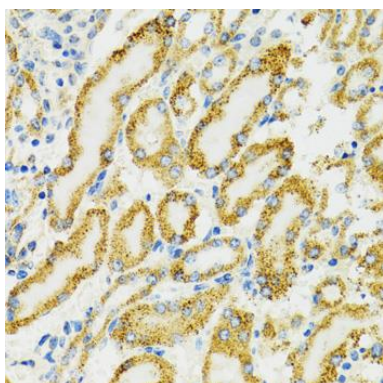
Storage:

Store at -20°C. Avoid freeze / thaw cycles. Buffer: PBS with 0.02% sodium azide, 50% glycerol, pH7.3.

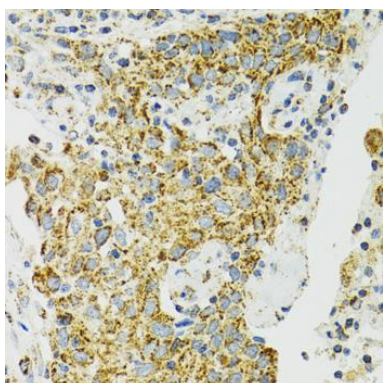
Product Images



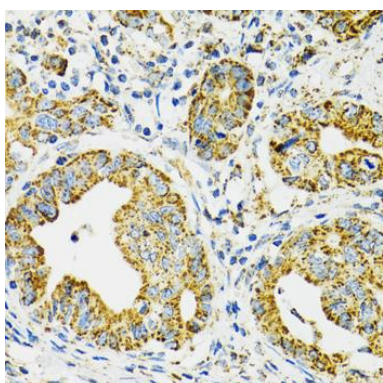
Western blot analysis of extracts of various cell lines, using HSPA9 antibody (CAB0558) at 1:1000 dilution. Secondary antibody: HRP Goat Anti-Rabbit IgG (H+L) (CABS014) at 1:10000 dilution. Lysates/proteins: 25ug per lane. Blocking buffer: 3% nonfat dry milk in TBST.



Immunohistochemistry of paraffin-embedded rat kidney using HSPA9 antibody (CAB0558) at dilution of 1:100 (40x lens).



Immunohistochemistry of paraffin-embedded human lung cancer using HSPA9 antibody (CAB0558) at dilution of 1:100 (40x lens).



Immunohistochemistry of paraffin-embedded human gastric cancer using HSPA9 antibody (CAB0558) at dilution of 1:100 (40x lens).