

LAMP2a Rabbit Monoclonal Antibody



CAB0593

Product Information

Size:

20uL, 50uL, 100uL, 200uL

Observed MW:

100kDa

Calculated MW:

120kDa

Applications:

WB IHC

Reactivity:

Human, Mouse, Rat

Protein Background

The protein encoded by this gene is a member of a family of membrane glycoproteins. This glycoprotein provides selectins with carbohydrate ligands. It may play a role in tumor cell metastasis. It may also function in the protection, maintenance, and adhesion of the lysosome. Alternative splicing of this gene results in multiple transcript variants encoding distinct proteins. [provided by RefSeq, Jul 2008]

Immunogen information

Gene ID:

3920

Uniprot

P13473

Synonyms:

CD107b; LAMP-2; LAMPB; LGP-96; LGP110

Antibody Information

Recommended dilutions:

WB 1:500 - 1:2000 IHC 1:50
- 1:200

Source:

Rabbit

Isotype:

IgG

Purification:

Affinity purification

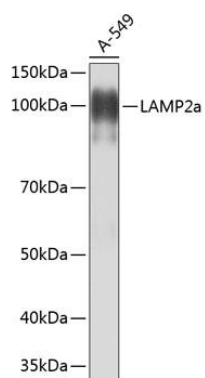
Immunogen:

A synthesized peptide derived from human LAMP2a

Storage:

Store at -20°C. Avoid freeze / thaw cycles. Buffer: PBS with 0.02% sodium azide, 0.05% BSA, 50% glycerol, pH7.3.

Product Images



Western blot - LAMP2a Rabbit mAb (CAB0593)