

Endo G Rabbit Polyclonal Antibody



CAB0604

Product Information

Size:

20uL, 50uL, 100uL, 200uL

Observed MW:

33kDa

Calculated MW:

32kDa

Applications:

WB IHC

Reactivity:

Human, Mouse, Rat

Protein Background

The protein encoded by this gene is a nuclear encoded endonuclease that is localized in the mitochondrion. The encoded protein is widely distributed among animals and cleaves DNA at GC tracts. This protein is capable of generating the RNA primers required by DNA polymerase gamma to initiate replication of mitochondrial DNA.

Immunogen information

Gene ID:

2021

Uniprot

Q14249

Synonyms:

ENDOG

Antibody Information

Recommended dilutions:

WB 1:500 - 1:2000 IHC 1:50
- 1:100

Source:

Rabbit

Isotype:

IgG

Purification:

Affinity purification

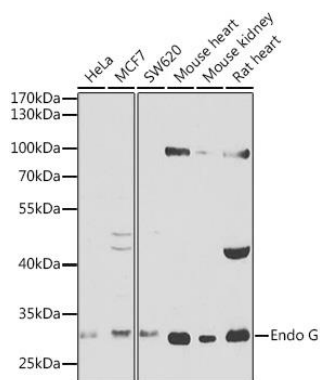
Immunogen:

Recombinant fusion protein containing a sequence corresponding to amino acids 49-297 of human Endo G (NP_004426.2).

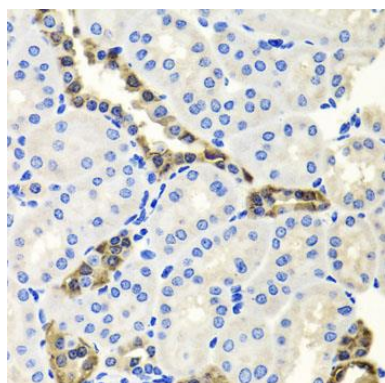
Storage:

Store at -20°C. Avoid freeze / thaw cycles. Buffer: PBS with 0.02% sodium azide, 50% glycerol, pH7.3.

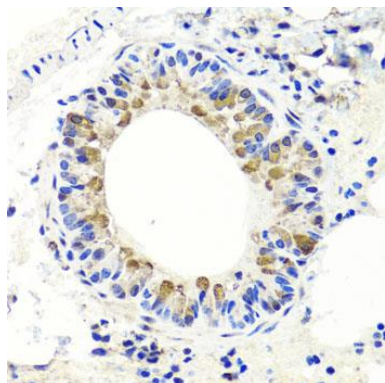
Product Images



Western blot analysis of extracts of various cell lines, using Endo G antibody (CAB0604) at 1:1000 dilution. Secondary antibody: HRP Goat Anti-Rabbit IgG (H+L) (CABS014) at 1:10000 dilution. Lysates/proteins: 25ug per lane. Blocking buffer: 3% nonfat dry milk in TBST. Detection: ECL Basic Kit (CABM00020). Exposure time: 90s.



Immunohistochemistry of paraffin-embedded mouse kidney using Endo G antibody (CAB0604) at dilution of 1:100 (40x lens).



Immunohistochemistry of paraffin-embedded mouse lung using Endo G antibody (CAB0604) at dilution of 1:100 (40x lens).