

# TCL1A Rabbit Polyclonal Antibody



CAB0629

---

## Product Information

### Size:

20uL, 50uL, 100uL, 200uL

### Observed MW:

16kDa

### Calculated MW:

13kDa

### Applications:

WB IF

### Reactivity:

Human

## Antibody Information

### Recommended dilutions:

WB 1:500 - 1:2000 IF 1:10 - 1:100

### Source:

Rabbit

### Isotype:

IgG

### Purification:

Affinity purification

## Protein Background

### Immunogen information

#### Gene ID:

8115

#### Uniprot

P56279

#### Synonyms:

TCL1A; TCL1

#### Immunogen:

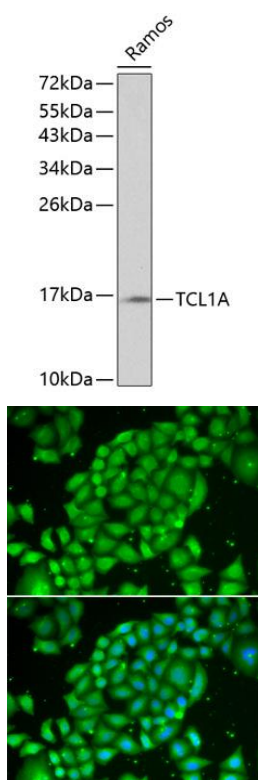
Recombinant fusion protein containing a sequence corresponding to amino acids 1-114 of human TCL1A (NP\_001092195.1).

#### Storage:

Store at -20°C. Avoid freeze / thaw cycles. Buffer: PBS with 0.02% sodium azide, 50% glycerol, pH7.3.

## Product Images

---



Western blot analysis of extracts of Ramos cells, using TCL1A antibody (CAB0629) at 1:1000 dilution. Secondary antibody: HRP Goat Anti-Rabbit IgG (H+L) (CABS014) at 1:10000 dilution. Lysates/proteins: 25ug per lane. Blocking buffer: 3% nonfat dry milk in TBST.

Immunofluorescence analysis of U2OS cells using TCL1A antibody (CAB0629). Blue: DAPI for nuclear staining.