

SSB Rabbit Polyclonal Antibody



CAB0630

Product Information

Size:

20uL, 50uL, 100uL, 200uL

Observed MW:

47kDa

Calculated MW:

46kDa

Applications:

WB IHC IF IP

Reactivity:

Human

Protein Background

The protein encoded by this gene is involved in diverse aspects of RNA metabolism, including binding and protecting poly(U) termini of nascent RNA polymerase III transcripts from exonuclease digestion, processing 5' and 3' ends of pre-tRNA precursors, acting as an RNA chaperone, and binding viral RNAs associated with hepatitis C virus. Autoantibodies reacting with this protein are found in the sera of patients with Sjogren syndrome and systemic lupus erythematosus. Alternative promoter usage results in two different transcript variants which encode the same protein.

Immunogen information

Gene ID:

6741

Uniprot

P05455

Synonyms:

SSB; LARP3; La; La/SSB

Antibody Information

Recommended dilutions:

WB 1:500 - 1:1000 IHC 1:50

- 1:200 IF 1:50 - 1:200 IP

1:50 - 1:200

Source:

Rabbit

Isotype:

IgG

Purification:

Affinity purification

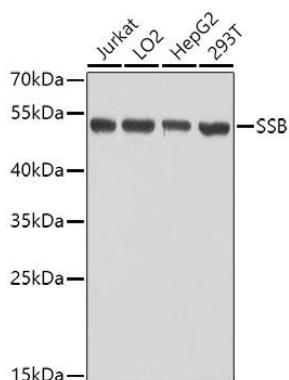
Immunogen:

Recombinant fusion protein containing a sequence corresponding to amino acids 166-408 of human SSB (NP_003133.1).

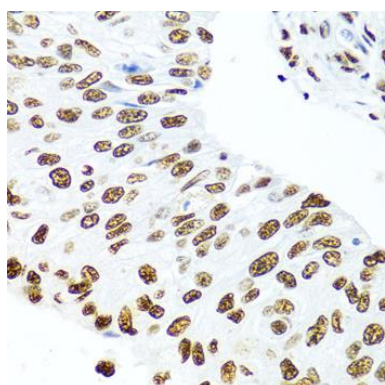
Storage:

Store at -20°C. Avoid freeze / thaw cycles. Buffer: PBS with 0.02% sodium azide, 50% glycerol, pH7.3.

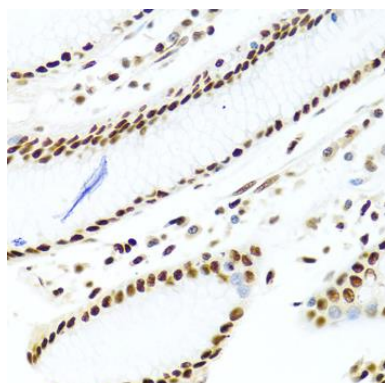
Product Images



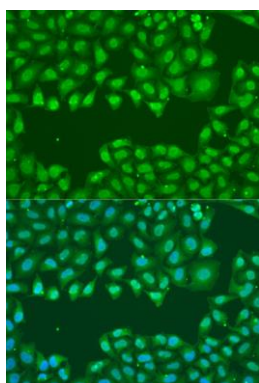
Western blot analysis of extracts of various cell lines, using SSB antibody (CAB0630) at 1:1000 dilution. Secondary antibody: HRP Goat Anti-Rabbit IgG (H+L) (CABS014) at 1:10000 dilution. Lysates/proteins: 25ug per lane. Blocking buffer: 3% nonfat dry milk in TBST. Detection: ECL Basic Kit (CABM00020). Exposure time: 1s.



Immunohistochemistry of paraffin-embedded human prostate cancer using SSB antibody (CAB0630) at dilution of 1:100 (40x lens).



Immunohistochemistry of paraffin-embedded human stomach using SSB antibody (CAB0630) at dilution of 1:100 (40x lens).



Immunofluorescence analysis of U2OS cells using SSB antibody (CAB0630) at dilution of 1:100. Blue: DAPI for nuclear staining.