

Smad5 Rabbit Polyclonal Antibody



CAB0635

Product Information

Size:

20uL, 50uL, 100uL, 200uL

Observed MW:

52KDa

Calculated MW:

52kDa

Applications:

WB IHC

Reactivity:

Human, Mouse, Rat

Protein Background

The protein encoded by this gene is involved in the transforming growth factor beta signaling pathway that results in an inhibition of the proliferation of hematopoietic progenitor cells. The encoded protein is activated by bone morphogenetic proteins type 1 receptor kinase, and may be involved in cancer. Alternative splicing results in multiple transcript variants.

Immunogen information

Gene ID:

4090

Uniprot

Q99717

Synonyms:

DWFC; JV5-1; MADH5; SMAD5

Antibody Information

Recommended dilutions:

WB 1:500 - 1:2000 IHC 1:50
- 1:100

Source:

Rabbit

Isotype:

IgG

Purification:

Affinity purification

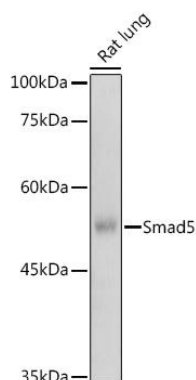
Immunogen:

A synthetic peptide corresponding to a sequence within amino acids 140-240 of human Smad5 (NP_005894.3).

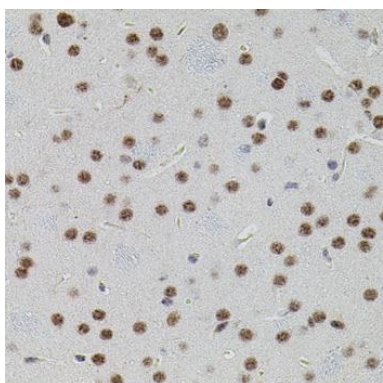
Storage:

Store at -20°C. Avoid freeze / thaw cycles. Buffer: PBS with 0.02% sodium azide, 50% glycerol, pH7.3.

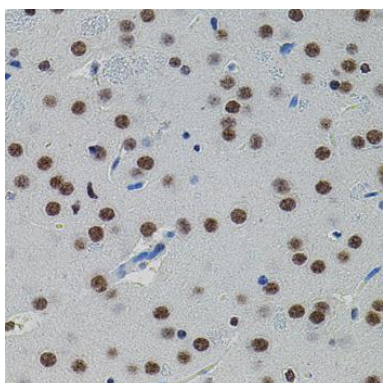
Product Images



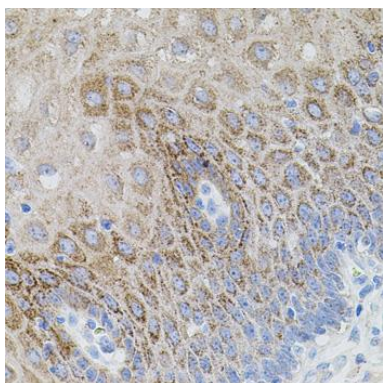
Western blot analysis of extracts of Rat lung, using Smad5 antibody (CAB0635) at 1:500 dilution. Secondary antibody: HRP Goat Anti-Rabbit IgG (H+L) (CABS014) at 1:10000 dilution. Lysates/proteins: 25ug per lane. Blocking buffer: 3% nonfat dry milk in TBST. Detection: ECL Basic Kit (CABM00020). Exposure time: 1s.



Immunohistochemistry of paraffin-embedded mouse brain using SMAD5 antibody (CAB0635) (40x lens).



Immunohistochemistry of paraffin-embedded rat brain using SMAD5 antibody (CAB0635) (40x lens).



Immunohistochemistry of paraffin-embedded human esophagus using SMAD5 antibody (CAB0635) (40x lens).