

# Lysozyme Rabbit Monoclonal Antibody



CAB0641

## Product Information

### Size:

20uL, 50uL, 100uL, 200uL

### Observed MW:

15KDa

### Calculated MW:

17kDa

### Applications:

WB IF

### Reactivity:

Human, Mouse

## Protein Background

This gene encodes human lysozyme, whose natural substrate is the bacterial cell wall peptidoglycan (cleaving the beta[1-4]glycosidic linkages between N-acetylmuramic acid and N-acetylglucosamine). Lysozyme is one of the antimicrobial agents found in human milk, and is also present in spleen, lung, kidney, white blood cells, plasma, saliva, and tears. The protein has antibacterial activity against a number of bacterial species. Missense mutations in this gene have been identified in heritable renal amyloidosis. [provided by RefSeq, Oct 2014]

## Immunogen information

### Gene ID:

4069

### Uniprot

P61626

### Synonyms:

LYZF1; LZM

## Antibody Information

### Recommended dilutions:

WB 1:500 - 1:2000 IF 1:50 - 1:200

### Source:

Rabbit

### Isotype:

IgG

### Purification:

Affinity purification

### Immunogen:

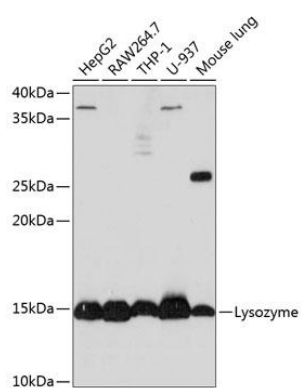
A synthesized peptide derived from human Lysozyme

### Storage:

Store at -20°C. Avoid freeze / thaw cycles. Buffer: PBS with 0.02% sodium azide, 0.05% BSA, 50% glycerol, pH7.3.

## Product Images

---



Western blot - Lysozyme Rabbit mAb (CAB0641)