

# TNFRSF6B Rabbit Polyclonal Antibody



CAB0649

## Product Information

### Size:

20uL, 50uL, 100uL, 200uL

### Observed MW:

33kDa

### Calculated MW:

32kDa

### Applications:

WB IHC

### Reactivity:

Human, Rat

## Protein Background

This gene belongs to the tumor necrosis factor receptor superfamily. The encoded protein is postulated to play a regulatory role in suppressing FasL- and LIGHT-mediated cell death. It acts as a decoy receptor that competes with death receptors for ligand binding. Over-expression of this gene has been noted in gastrointestinal tract tumors. Read-through transcription into this gene from the neighboring upstream gene, which encodes regulator of telomere elongation helicase 1 (RTEL1), generates a non-coding transcript.

## Immunogen information

### Gene ID:

8771

### Uniprot

O95407

### Synonyms:

TNFRSF6B; DCR3; DJ583P15.1.1; M68; M68E; TR6

## Antibody Information

### Recommended dilutions:

WB 1:500 - 1:2000 IHC 1:50 - 1:200

### Source:

Rabbit

### Isotype:

IgG

### Purification:

Affinity purification

### Immunogen:

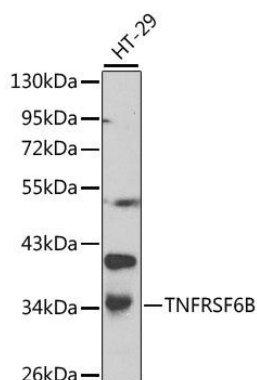
Recombinant fusion protein containing a sequence corresponding to amino acids 35-300 of human TNFRSF6B (NP\_003814.1).

### Storage:

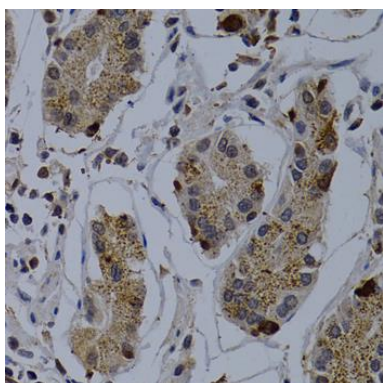
Store at -20°C. Avoid freeze / thaw cycles. Buffer: PBS with 0.02% sodium azide, 50% glycerol, pH7.3.

## Product Images

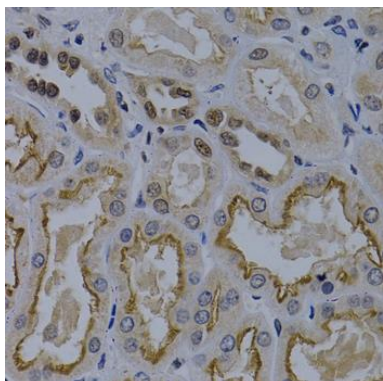
---



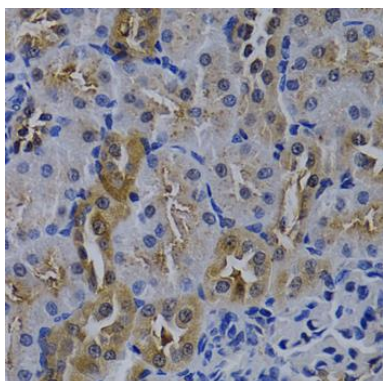
Western blot analysis of extracts of HT-29 cells, using TNFRSF6B antibody (CAB0649) at 1:1000 dilution. Secondary antibody: HRP Goat Anti-Rabbit IgG (H+L) (CABS014) at 1:10000 dilution. Lysates/proteins: 25ug per lane. Blocking buffer: 3% nonfat dry milk in TBST. Detection: ECL Basic Kit (CABM00020).



Immunohistochemistry of paraffin-embedded human stomach using TNFRSF6B antibody (CAB0649) at dilution of 1:200 (40x lens).



Immunohistochemistry of paraffin-embedded human kidney cancer using TNFRSF6B antibody (CAB0649) at dilution of 1:200 (40x lens).



Immunohistochemistry of paraffin-embedded rat kidney using TNFRSF6B antibody (CAB0649) at dilution of 1:200 (40x lens).