

# DRP1 Rabbit Polyclonal Antibody



CAB0650

---

## Product Information

### Size:

20uL, 50uL, 100uL, 200uL

### Observed MW:

78kDa

### Calculated MW:

60kDa/78kDa/79kDa/80kDa/  
81kDa/82kDa/83kDa

### Applications:

WB

### Reactivity:

Human, Mouse, Rat

## Antibody Information

### Recommended dilutions:

WB 1:500 - 1:1000

### Source:

Rabbit

### Isotype:

IgG

### Purification:

Affinity purification

## Protein Background

This gene encodes a member of the dynamin superfamily of GTPases. The encoded protein mediates mitochondrial and peroxisomal division, and is involved in developmentally regulated apoptosis and programmed necrosis. Dysfunction of this gene is implicated in several neurological disorders, including Alzheimer's disease. Mutations in this gene are associated with the autosomal dominant disorder, encephalopathy, lethal, due to defective mitochondrial and peroxisomal fission (EMPF). Alternative splicing results in multiple transcript variants encoding different isoforms.

## Immunogen information

### Gene ID:

10059

### Uniprot

O00429

### Synonyms:

DNM1L; DLP1; DRP1; DVLP; DYMPLE; EMPF; EMPF1; HDYNIV

### Immunogen:

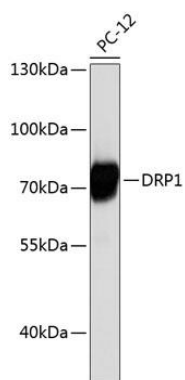
A synthetic peptide of human DRP1

### Storage:

Store at -20°C. Avoid freeze / thaw cycles. Buffer: PBS with 0.02% sodium azide, 50% glycerol, pH7.3.

## Product Images

---



Western blot analysis of extracts of PC-12 cells, using DRP1 antibody (CAB0650). Secondary antibody: HRP Goat Anti-Rabbit IgG (H+L) (CABS014) at 1:10000 dilution. Lysates/proteins: 25ug per lane. Blocking buffer: 3% nonfat dry milk in TBST.