

# CPT2 Rabbit Monoclonal Antibody



CAB0653

---

## Product Information

### Size:

20uL, 50uL, 100uL, 200uL

### Observed MW:

70KDa

### Calculated MW:

74kDa

### Applications:

WB

### Reactivity:

Human, Mouse, Rat

## Protein Background

The protein encoded by this gene is a nuclear protein which is transported to the mitochondrial inner membrane. Together with carnitine palmitoyltransferase I, the encoded protein oxidizes long-chain fatty acids in the mitochondria. Defects in this gene are associated with mitochondrial long-chain fatty-acid (LCFA) oxidation disorders. [provided by RefSeq, Jul 2008]

## Immunogen information

### Gene ID:

1376

### Uniprot

P23786

### Synonyms:

CPT1; CPTASE; IIAE4

## Antibody Information

### Recommended dilutions:

WB 1:500 - 1:2000

### Source:

Rabbit

### Isotype:

IgG

### Purification:

Affinity purification

### Immunogen:

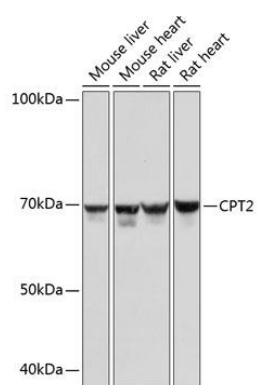
A synthesized peptide derived from human CPT2

### Storage:

Store at -20°C. Avoid freeze / thaw cycles. Buffer: PBS with 0.02% sodium azide, 0.05% BSA, 50% glycerol, pH7.3.

## Product Images

---



Western blot - CPT2 Rabbit mAb (CAB0653)