

ZO-1 Rabbit Polyclonal Antibody



CAB0659

Product Information

Size:

20uL, 50uL, 100uL, 200uL

Observed MW:

250kDa

Calculated MW:

186kDa/195kDa

Applications:

WB, IHC

Reactivity:

Human, Mouse, Rat

Category:

Polyclonal Antibodies

Protein Background

This gene encodes a protein located on a cytoplasmic membrane surface of intercellular tight junctions. The encoded protein may be involved in signal transduction at cell-cell junctions. Alternative splicing of this gene results in multiple transcript variants.

Immunogen information

Gene ID:

7082

Uniprot

Q07157

Synonyms:

TJP1; ZO-1

Immunogen:

A synthetic peptide corresponding to a sequence within amino acids 1600-1700 of human ZO-1 (NP_003248.3).

Antibody Information

Recommended dilutions:

WB 1:500 - 1:2000

IHC 1:50 - 1:200

Source:

Rabbit

Isotype:

IgG

Purification:

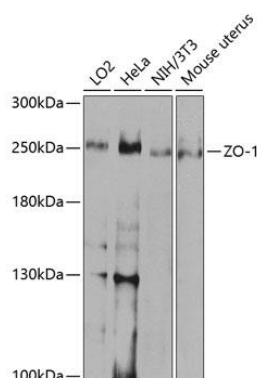
Affinity purification

Storage:

Store at -20°C. Avoid freeze / thaw cycles.

Buffer: PBS with 0.02% sodium azide, 50% glycerol, pH7.3.

Product Images



Western blot analysis of extracts of various cell lines, using ZO-1 antibody (CAB0659) at 1:1000 dilution.

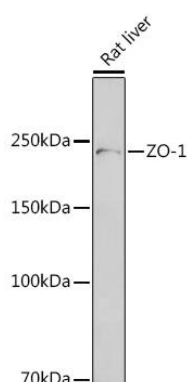
Secondary antibody: HRP Goat Anti-Rabbit IgG (H+L) (CABS014) at 1:10000 dilution.

Lysates/proteins: 25ug per lane.

Blocking buffer: 3% non-fat dry milk in TBST.

Detection: ECL Enhanced Kit.

Exposure time: 15s.



Western blot analysis of extracts of Rat liver, using ZO-1 antibody (CAB0659) at 1:1000 dilution.

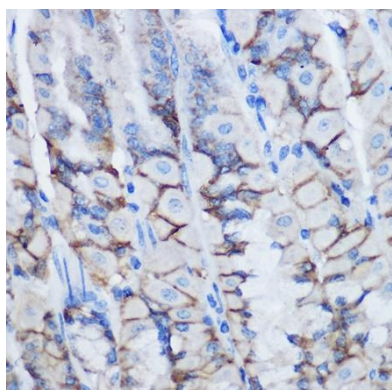
Secondary antibody: HRP Goat Anti-Rabbit IgG (H+L) (CABS014) at 1:10000 dilution.

Lysates/proteins: 25ug per lane.

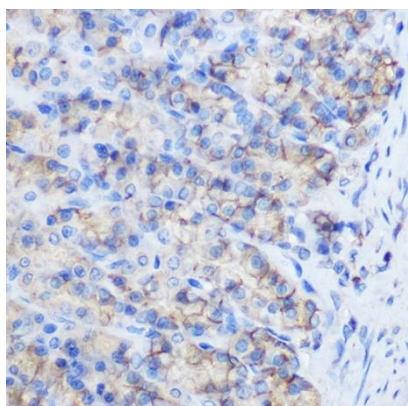
Blocking buffer: 3% non-fat dry milk in TBST.

Detection: ECL Basic Kit (AbGn00020).

Exposure time: 30s.



Immunohistochemistry of paraffin-embedded Mouse stomach using ZO-1 antibody (CAB0659) at dilution of 1:100 (40x lens).



Immunohistochemistry of paraffin-embedded Rat stomach using ZO-1 antibody (CAB0659) at dilution of 1:100 (40x lens).