

# CD8A Rabbit Monoclonal Antibody



CAB0663

## Product Information

### Size:

20uL, 50uL, 100uL, 200uL

### Observed MW:

35KDa

### Calculated MW:

32kDa

### Applications:

WB IHC

### Reactivity:

Human

## Antibody Information

### Recommended dilutions:

WB 1:500 - 1:2000 IHC 1:50  
- 1:200

### Source:

Rabbit

### Isotype:

IgG

### Purification:

Affinity purification

## Protein Background

The CD8 antigen is a cell surface glycoprotein found on most cytotoxic T lymphocytes that mediates efficient cell-cell interactions within the immune system. The CD8 antigen acts as a coreceptor with the T-cell receptor on the T lymphocyte to recognize antigens displayed by an antigen presenting cell in the context of class I MHC molecules. The coreceptor functions as either a homodimer composed of two alpha chains or as a heterodimer composed of one alpha and one beta chain. Both alpha and beta chains share significant homology to immunoglobulin variable light chains. This gene encodes the CD8 alpha chain. Multiple transcript variants encoding different isoforms have been found for this gene. [provided by RefSeq, Nov 2011]

## Immunogen information

### Gene ID:

925

### Uniprot

P01732

### Synonyms:

CD8; Leu2; MAL; p32

### Immunogen:

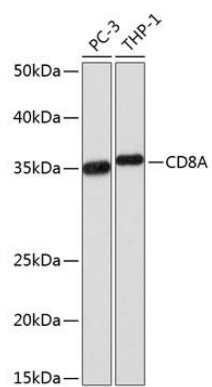
A synthesized peptide derived from human CD8A

### Storage:

Store at -20°C. Avoid freeze / thaw cycles. Buffer: PBS with 0.02% sodium azide, 0.05% BSA, 50% glycerol, pH7.3.

## Product Images

---



Western blot - CD8A Rabbit mAb (CAB0663)