

MYOD1 Rabbit Polyclonal Antibody



CAB0671

Product Information

Size:

20uL, 50uL, 100uL, 200uL

Observed MW:

40KDa

Calculated MW:

34kDa

Applications:

WB IF

Reactivity:

Human, Mouse, Rat

Protein Background

This gene encodes a nuclear protein that belongs to the basic helix-loop-helix family of transcription factors and the myogenic factors subfamily. It regulates muscle cell differentiation by inducing cell cycle arrest, a prerequisite for myogenic initiation. The protein is also involved in muscle regeneration. It activates its own transcription which may stabilize commitment to myogenesis.

Immunogen information

Gene ID:

4654

Uniprot

P15172

Synonyms:

MYOD1; MYF3; MYOD; PUM; bHLHc1

Antibody Information

Recommended dilutions:

WB 1:500 - 1:1000 IF 1:20 - 1:50

Source:

Rabbit

Isotype:

IgG

Purification:

Affinity purification

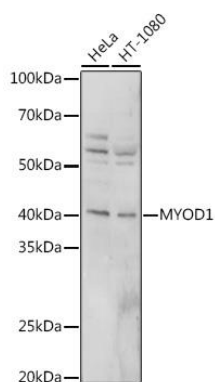
Immunogen:

A synthetic peptide corresponding to a sequence within amino acids 150-250 of human MYOD1 (NP_002469.2).

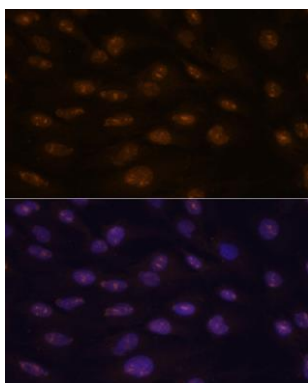
Storage:

Store at -20°C. Avoid freeze / thaw cycles. Buffer: PBS with 0.02% sodium azide, 50% glycerol, pH7.3.

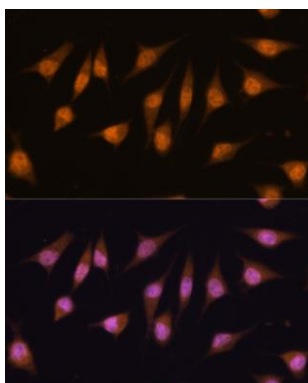
Product Images



Western blot analysis of extracts of various cell lines, using MYOD1 Rabbit pAb (CAB0671) at 1:500 dilution. Secondary antibody: HRP Goat Anti-Rabbit IgG (H+L) (CABS014) at 1:10000 dilution. Lysates/proteins: 25ug per lane. Blocking buffer: 3% nonfat dry milk in TBST. Detection: ECL Basic Kit (CABM00020). Exposure time: 30s.



Immunofluorescence analysis of C6 cells using MYOD1 antibody (CAB0671) at dilution of 1:100. Blue: DAPI for nuclear staining.



Immunofluorescence analysis of L-929 cells using MYOD1 antibody (CAB0671) at dilution of 1:100. Blue: DAPI for nuclear staining.