

# CDCA8 Rabbit Polyclonal Antibody



CAB0675

## Product Information

### Size:

20uL, 50uL, 100uL, 200uL

### Observed MW:

36-38kDa

### Calculated MW:

31kDa

### Applications:

WB IHC

### Reactivity:

Human, Mouse, Rat

## Protein Background

This gene encodes a component of the chromosomal passenger complex. This complex is an essential regulator of mitosis and cell division. This protein is cell-cycle regulated and is required for chromatin-induced microtubule stabilization and spindle formation. Alternate splicing results in multiple transcript variants. Pseudogenes of this gene are found on chromosomes 7, 8 and 16.

## Immunogen information

### Gene ID:

55143

### Uniprot

Q53HL2

### Synonyms:

CDCA8; BOR; BOREALIN; DasraB; MESRGP; borealin

## Antibody Information

### Recommended dilutions:

WB 1:500 - 1:2000 IHC

1:100 - 1:200

### Source:

Rabbit

### Isotype:

IgG

### Purification:

Affinity purification

### Immunogen:

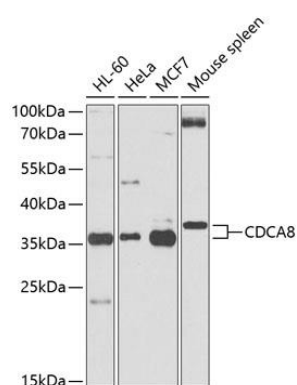
Recombinant protein of human CDCA8

### Storage:

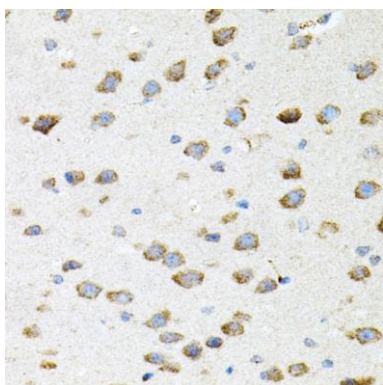
Store at -20°C. Avoid freeze / thaw cycles. Buffer: PBS with 0.02% sodium azide, 50% glycerol, pH7.3.

## Product Images

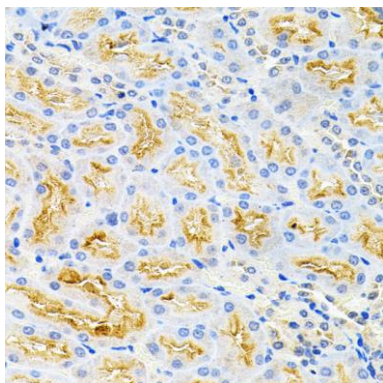
---



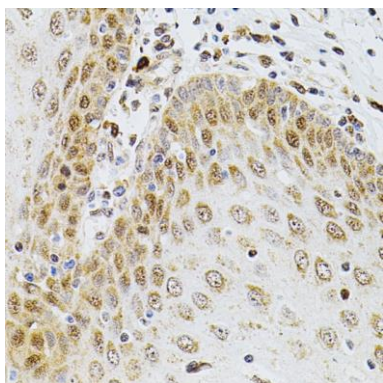
Western blot analysis of extracts of various cell lines, using CDCA8 antibody (CAB0675) at 1:500 dilution. Secondary antibody: HRP Goat Anti-Rabbit IgG (H+L) (CABS014) at 1:10000 dilution. Lysates/proteins: 25ug per lane. Blocking buffer: 3% nonfat dry milk in TBST. Detection: ECL Basic Kit (CABM00020). Exposure time: 60s.



Immunohistochemistry of paraffin-embedded mouse brain using CDCA8 antibody (CAB0675) (40x lens).



Immunohistochemistry of paraffin-embedded rat kidney using CDCA8 antibody (CAB0675) (40x lens).



Immunohistochemistry of paraffin-embedded human esophagus using CDCA8 antibody (CAB0675) (40x lens).