

# GATA2 Rabbit Polyclonal Antibody



CAB0677

## Product Information

### Size:

20uL, 50uL, 100uL, 200uL

### Observed MW:

50kDa

### Calculated MW:

49kDa/50kDa

### Applications:

WB IHC

### Reactivity:

Human, Mouse, Rat

## Antibody Information

### Recommended dilutions:

WB 1:500 - 1:2000 IHC 1:50  
- 1:200

### Source:

Rabbit

### Isotype:

IgG

### Purification:

Affinity purification

## Protein Background

This gene encodes a member of the GATA family of zinc-finger transcription factors that are named for the consensus nucleotide sequence they bind in the promoter regions of target genes. The encoded protein plays an essential role in regulating transcription of genes involved in the development and proliferation of hematopoietic and endocrine cell lineages. Alternative splicing results in multiple transcript variants.

## Immunogen information

### Gene ID:

2624

### Uniprot

P23769

### Synonyms:

GATA2; DCML; IMD21; MONOMAC; NFE1B

### Immunogen:

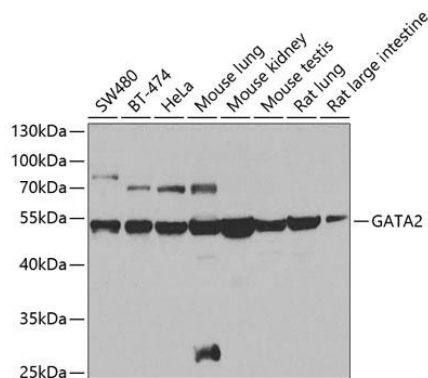
Recombinant fusion protein containing a sequence corresponding to amino acids 1-300 of human GATA2 (NP\_116027.2).

### Storage:

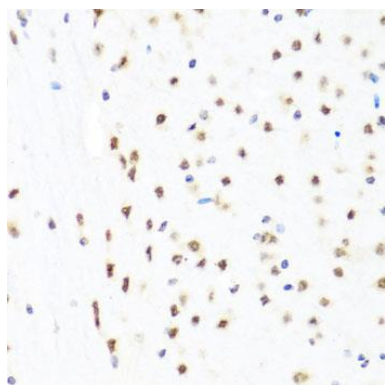
Store at -20°C. Avoid freeze / thaw cycles. Buffer: PBS with 0.02% sodium azide, 50% glycerol, pH7.3.

## Product Images

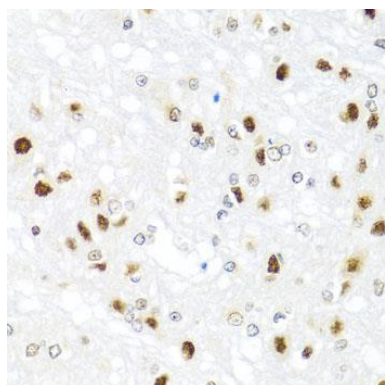
---



Western blot analysis of extracts of various cell lines, using GATA2 antibody (CAB0677) at 1:1000 dilution. Secondary antibody: HRP Goat Anti-Rabbit IgG (H+L) (CABS014) at 1:10000 dilution. Lysates/proteins: 25ug per lane. Blocking buffer: 3% nonfat dry milk in TBST. Detection: ECL Basic Kit (CABM00020). Exposure time: 30s.



Immunohistochemistry of paraffin-embedded mouse brain using GATA2 antibody (CAB0677) at dilution of 1:100 (40x lens).



Immunohistochemistry of paraffin-embedded rat brain using GATA2 antibody (CAB0677) at dilution of 1:100 (40x lens).