

# ACVR1C Rabbit Polyclonal Antibody



CAB0678

---

## Product Information

### Size:

20uL, 50uL, 100uL, 200uL

### Observed MW:

60kDa

### Calculated MW:

37kDa/46kDa/49kDa/54kDa

### Applications:

WB IHC

### Reactivity:

Human, Mouse, Rat

## Antibody Information

### Recommended dilutions:

WB 1:500 - 1:2000 IHC

1:100 - 1:200

### Source:

Rabbit

### Isotype:

IgG

### Purification:

Affinity purification

## Protein Background

### Immunogen information

#### Gene ID:

130399

#### Uniprot

Q8NER5

#### Synonyms:

ACVR1C; ACVRLK7; ALK7

#### Immunogen:

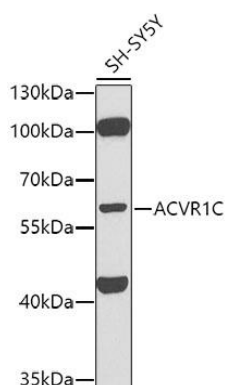
Recombinant fusion protein containing a sequence corresponding to amino acids 22-113 of human ACVR1C (NP\_660302.2).

#### Storage:

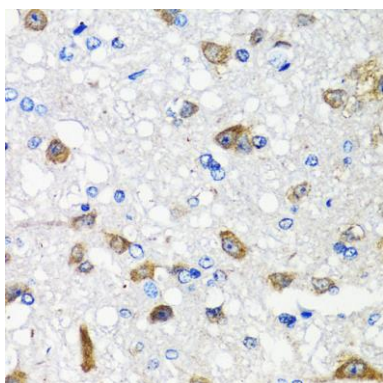
Store at -20°C. Avoid freeze / thaw cycles. Buffer: PBS with 0.02% sodium azide, 50% glycerol, pH7.3.

## Product Images

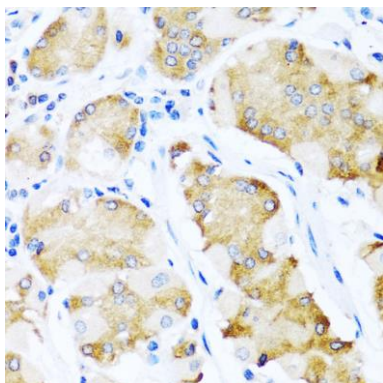
---



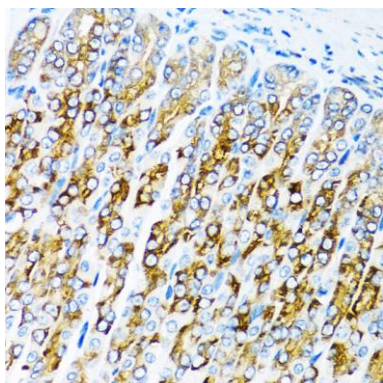
Western blot analysis of extracts of SH-SY5Y cells, using ACVR1C antibody (CAB0678) at 1:1000 dilution. Secondary antibody: HRP Goat Anti-Rabbit IgG (H+L) (CABS014) at 1:10000 dilution. Lysates/proteins: 25ug per lane. Blocking buffer: 3% nonfat dry milk in TBST. Detection: ECL Basic Kit (CABM00020). Exposure time: 90s.



Immunohistochemistry of paraffin-embedded rat brain using ACVR1C antibody (CAB0678) at dilution of 1:100 (40x lens).



Immunohistochemistry of paraffin-embedded human stomach using ACVR1C antibody (CAB0678) at dilution of 1:100 (40x lens).



Immunohistochemistry of paraffin-embedded mouse stomach using ACVR1C antibody (CAB0678) at dilution of 1:100 (40x lens).