

PSMG2 Rabbit Polyclonal Antibody



CAB0680

Product Information

Size:

20uL, 50uL, 100uL, 200uL

Observed MW:

29kDa

Calculated MW:

26kDa/29kDa

Applications:

WB

Reactivity:

Human, Mouse, Rat

Antibody Information

Recommended dilutions:

WB 1:500 - 1:2000

Source:

Rabbit

Isotype:

IgG

Purification:

Affinity purification

Protein Background

Immunogen information

Gene ID:

56984

Uniprot

Q969U7

Synonyms:

PSMG2; CLAST3; HCCA3; HsT1707; MDS003; PAC2; TNFSF5IP1

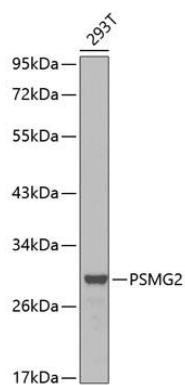
Immunogen:

Recombinant fusion protein containing a sequence corresponding to amino acids 1-264 of human PSMG2 (NP_064617.2).

Storage:

Store at -20°C. Avoid freeze / thaw cycles. Buffer: PBS with 0.02% sodium azide, 50% glycerol, pH7.3.

Product Images



Western blot analysis of extracts of 293T cells, using PSMG2 antibody (CAB0680). Secondary antibody: HRP Goat Anti-Rabbit IgG (H+L) (CABS014) at 1:10000 dilution. Lysates/proteins: 25ug per lane. Blocking buffer: 3% nonfat dry milk in TBST.