

SOCS3 Rabbit Polyclonal Antibody



CAB0694

Product Information

Size:

20uL, 50uL, 100uL, 200uL

Observed MW:

30kDa

Calculated MW:

24kDa

Applications:

WB IHC IF

Reactivity:

Human, Mouse, Rat

Protein Background

This gene encodes a member of the STAT-induced STAT inhibitor (SSI), also known as suppressor of cytokine signaling (SOCS), family. SSI family members are cytokine-inducible negative regulators of cytokine signaling. The expression of this gene is induced by various cytokines, including IL6, IL10, and interferon (IFN)-gamma. The protein encoded by this gene can bind to JAK2 kinase, and inhibit the activity of JAK2 kinase. Studies of the mouse counterpart of this gene suggested the roles of this gene in the negative regulation of fetal liver hematopoiesis, and placental development.

Immunogen information

Gene ID:

9021

Uniprot

O14543

Synonyms:

SOCS3; ATOD4; CIS3; Cish3; SOCS-3; SSI-3; SSI3

Antibody Information

Recommended dilutions:

WB 1:500 - 1:2000 IHC 1:50
- 1:100 IF 1:50 - 1:100

Source:

Rabbit

Isotype:

IgG

Purification:

Affinity purification

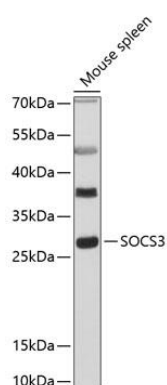
Immunogen:

A synthetic peptide corresponding to a sequence within amino acids 100 to the C-terminus of human SOCS3 (NP_003946.3).

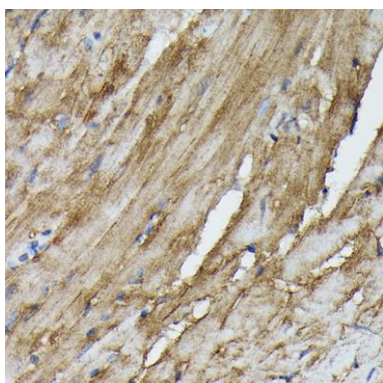
Storage:

Store at -20°C. Avoid freeze / thaw cycles. Buffer: PBS with 0.02% sodium azide, 50% glycerol, pH7.3.

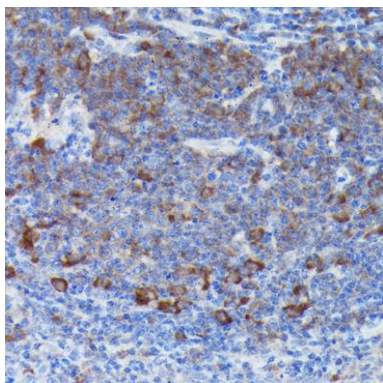
Product Images



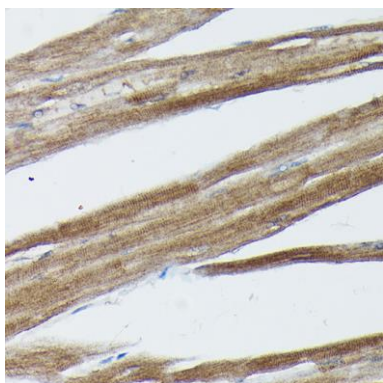
Western blot analysis of extracts of mouse spleen, using SOCS3 antibody (CAB0694) at 1:3000 dilution. Secondary antibody: HRP Goat Anti-Rabbit IgG (H+L) (CABS014) at 1:10000 dilution. Lysates/proteins: 25ug per lane. Blocking buffer: 3% nonfat dry milk in TBST. Detection: ECL Basic Kit (CABM00020). Exposure time: 30s.



Immunohistochemistry of paraffin-embedded mouse heart using SOCS3 Rabbit pAb (CAB0694) at dilution of 1:50 (40x lens).



Immunohistochemistry of paraffin-embedded mouse spleen using SOCS3 Rabbit pAb (CAB0694) at dilution of 1:50 (40x lens).



Immunohistochemistry of paraffin-embedded rat heart using SOCS3 Rabbit pAb (CAB0694) at dilution of 1:50 (40x lens).