

EZR Rabbit Polyclonal Antibody



CAB0703

Product Information

Size:

20uL, 50uL, 100uL, 200uL

Observed MW:

90kDa

Calculated MW:

69kDa

Applications:

WB IHC IF IP

Reactivity:

Human, Mouse, Rat

Protein Background

The cytoplasmic peripheral membrane protein encoded by this gene functions as a protein-tyrosine kinase substrate in microvilli. As a member of the ERM protein family, this protein serves as an intermediate between the plasma membrane and the actin cytoskeleton. This protein plays a key role in cell surface structure adhesion, migration and organization, and it has been implicated in various human cancers. A pseudogene located on chromosome 3 has been identified for this gene. Alternatively spliced variants have also been described for this gene.

Immunogen information

Gene ID:

7430

Uniprot

P15311

Synonyms:

CVIL; CVL; HEL-S-105; VIL2; EZR; Ezrin; ezrin

Antibody Information

Recommended dilutions:

WB 1:500 - 1:2000 IHC 1:50

- 1:100 IF 1:50 - 1:100 IP

1:50 - 1:100

Source:

Rabbit

Isotype:

IgG

Purification:

Affinity purification

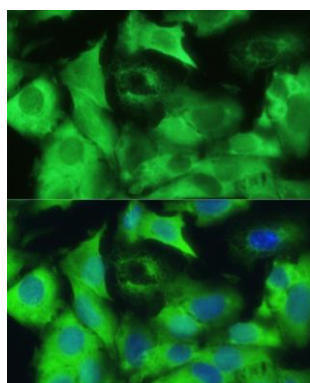
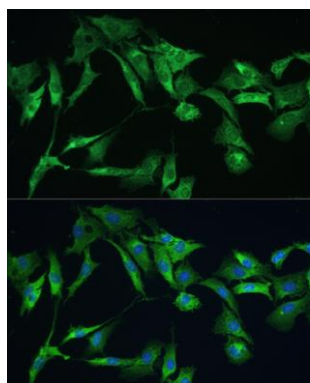
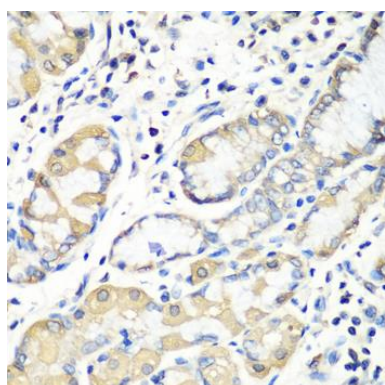
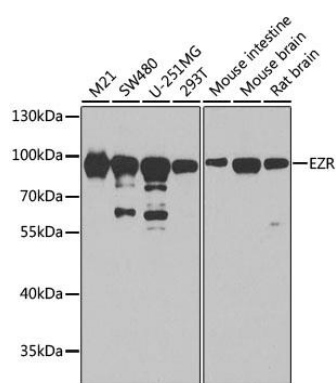
Immunogen:

Recombinant fusion protein containing a sequence corresponding to amino acids 350-470 of human EZR (NP_003370.2).

Storage:

Store at -20°C. Avoid freeze / thaw cycles. Buffer: PBS with 0.02% sodium azide, 50% glycerol, pH7.3.

Product Images



Western blot analysis of extracts of various cell lines, using EZR antibody (CAB0703) at 1:1000 dilution. Secondary antibody: HRP Goat Anti-Rabbit IgG (H+L) (CABS014) at 1:10000 dilution. Lysates/proteins: 25ug per lane. Blocking buffer: 3% nonfat dry milk in TBST. Detection: ECL Basic Kit (CABM00020). Exposure time: 30s.

Immunohistochemistry of paraffin-embedded human stomach using EZR antibody (CAB0703) at dilution of 1:100 (40x lens).

Immunofluorescence analysis of C6 cells using EZR antibody (CAB0703) at dilution of 1:100. Blue: DAPI for nuclear staining.

Immunofluorescence analysis of U-2 OS cells using EZR antibody (CAB0703) at dilution of 1:100. Blue: DAPI for nuclear staining.