

CEBPB Rabbit Polyclonal Antibody



CAB0711

Product Information

Size:

20uL, 50uL, 100uL, 200uL

Observed MW:

20KDa/42-46KDa

Calculated MW:

15kDa/33kDa/36kDa

Applications:

WB IHC

Reactivity:

Human, Mouse, Rat

Antibody Information

Recommended dilutions:

WB 1:500 - 1:1000 IHC 1:20
- 1:100

Source:

Rabbit

Isotype:

IgG

Purification:

Affinity purification

Protein Background

This intronless gene encodes a transcription factor that contains a basic leucine zipper (bZIP) domain. The encoded protein functions as a homodimer but can also form heterodimers with CCAAT/enhancer-binding proteins alpha, delta, and gamma. Activity of this protein is important in the regulation of genes involved in immune and inflammatory responses, among other processes. The use of alternative in-frame AUG start codons results in multiple protein isoforms, each with distinct biological functions.

Immunogen information

Gene ID:

1051

Uniprot

P17676

Synonyms:

C/EBP-beta; IL6DBP; NF-IL6; TCF5; CEBP beta; CEBPB

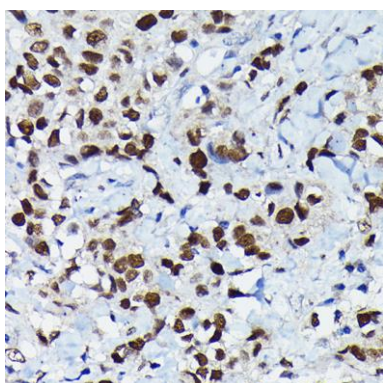
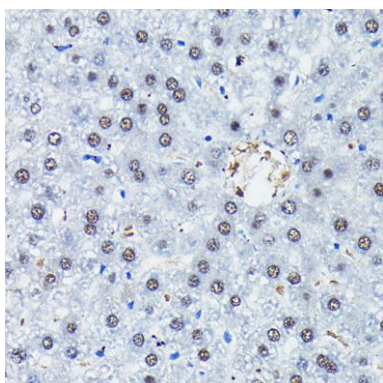
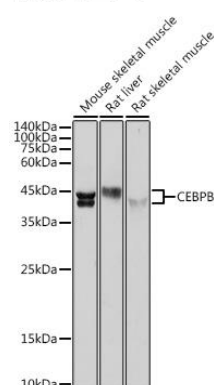
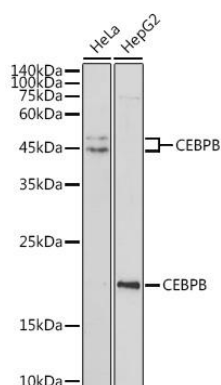
Immunogen:

A synthetic peptide corresponding to a sequence within amino acids 150-250 of human CEBPB (NP_005185.2).

Storage:

Store at -20°C. Avoid freeze / thaw cycles. Buffer: PBS with 0.02% sodium azide, 50% glycerol, pH7.3.

Product Images



Western blot analysis of extracts of various cell lines, using CEBPB antibody (CAB0711) at 1:500 dilution. Secondary antibody: HRP Goat Anti-Rabbit IgG (H+L) (CABS014) at 1:10000 dilution. Lysates/proteins: 25ug per lane. Blocking buffer: 3% nonfat dry milk in TBST. Detection: ECL Basic Kit (CABM00020). Exposure time: 180s.

Western blot analysis of extracts of various cell lines, using CEBPB antibody (CAB0711) at 1:500 dilution. Secondary antibody: HRP Goat Anti-Rabbit IgG (H+L) (CABS014) at 1:10000 dilution. Lysates/proteins: 25ug per lane. Blocking buffer: 3% nonfat dry milk in TBST. Detection: ECL Enhanced Kit (CABM00021). Exposure time: 180s.

Immunohistochemistry of paraffin-embedded rat liver using CEBPB Rabbit pAb (CAB0711) at dilution of 1:100 (40x lens).

Immunohistochemistry of paraffin-embedded human breast cancer using CEBPB Rabbit pAb (CAB0711) at dilution of 1:100 (40x lens).