

Caspase-7 Rabbit Polyclonal Antibody



CAB0716

Product Information

Size:

20uL, 50uL, 100uL, 200uL

Observed MW:

Refer to figures

Calculated MW:

28kDa/31kDa/34kDa/37kDa

Applications:

IHC IP

Reactivity:

Human, Rat

Protein Background

This gene encodes a member of the cysteine-aspartic acid protease (caspase) family. Sequential activation of caspases plays a central role in the execution-phase of cell apoptosis. Caspases exist as inactive proenzymes which undergo proteolytic processing at conserved aspartic residues to produce two subunits, large and small, that dimerize to form the active enzyme. The precursor of the encoded protein is cleaved by caspase 3 and 10, is activated upon cell death stimuli and induces apoptosis. Alternatively spliced transcript variants encoding multiple isoforms have been observed for this gene.

Immunogen information

Gene ID:

840

Uniprot

P55210

Synonyms:

CASP7; CASP-7; CMH-1; ICE-LAP3; LICE2; MCH3; caspase-7; Casp7

Antibody Information

Recommended dilutions:

IHC 1:50 - 1:100 IP 1:50 - 1:100

Source:

Rabbit

Isotype:

IgG

Purification:

Affinity purification

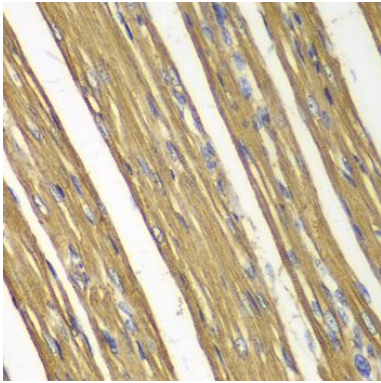
Immunogen:

Recombinant fusion protein containing a sequence corresponding to amino acids 24-303 of human Caspase-7 (NP_001218.1).

Storage:

Store at -20°C. Avoid freeze / thaw cycles. Buffer: PBS with 0.02% sodium azide, 50% glycerol, pH7.3.

Product Images



Immunohistochemistry of paraffin-embedded rat heart using Caspase-7 antibody (CAB0716) at dilution of 1:100 (40x lens).