

# TSC1 Rabbit Polyclonal Antibody



CAB0720

---

## Product Information

### Size:

20uL, 50uL, 100uL, 200uL

### Observed MW:

140-170kDa

### Calculated MW:

124kDa/129kDa

### Applications:

WB IHC IF

### Reactivity:

Human, Mouse, Rat

## Protein Background

This gene encodes a growth inhibitory protein thought to play a role in the stabilization of tuberin. Mutations in this gene have been associated with tuberous sclerosis. Alternative splicing results in multiple transcript variants.

## Immunogen information

### Gene ID:

7248

### Uniprot

Q92574

### Synonyms:

TSC1; LAM; TSC; hamartin

## Antibody Information

### Recommended dilutions:

WB 1:500 - 1:1000 IHC 1:50  
- 1:100 IF 1:50 - 1:100

### Source:

Rabbit

### Isotype:

IgG

### Purification:

Affinity purification

### Immunogen:

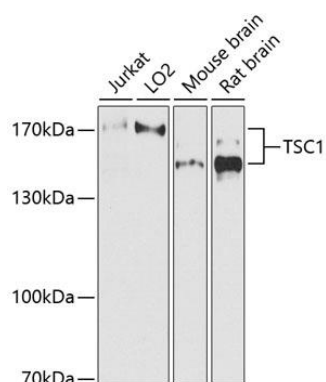
A synthetic peptide corresponding to a sequence within amino acids 550-650 of human TSC1 (NP\_000359.1).

### Storage:

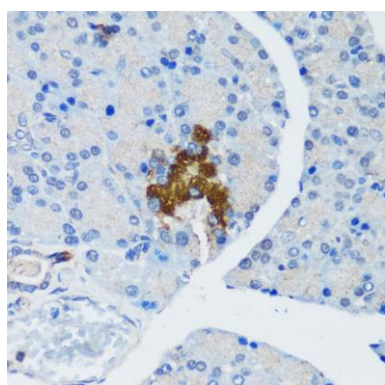
Store at -20°C. Avoid freeze / thaw cycles. Buffer: PBS with 0.02% sodium azide, 50% glycerol, pH7.3.

## Product Images

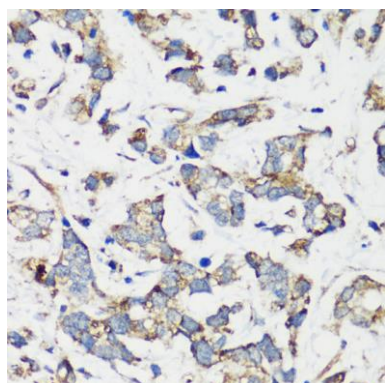
---



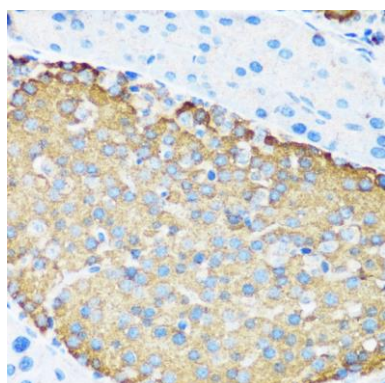
Western blot analysis of extracts of various cell lines, using TSC1 antibody (CAB0720) at 1:1000 dilution. Secondary antibody: HRP Goat Anti-Rabbit IgG (H+L) (CABS014) at 1:10000 dilution. Lysates/proteins: 25ug per lane. Blocking buffer: 3% nonfat dry milk in TBST. Detection: ECL Basic Kit (CABM00020). Exposure time: 90s.



Immunohistochemistry of paraffin-embedded rat pancreatic islet using TSC1 antibody (CAB0720) at dilution of 1:200 (40x lens).



Immunohistochemistry of paraffin-embedded human gastric cancer using TSC1 antibody (CAB0720) at dilution of 1:200 (40x lens).



Immunohistochemistry of paraffin-embedded mouse pancreatic islet using TSC1 antibody (CAB0720) at dilution of 1:200 (40x lens).