

CD34 Rabbit Polyclonal Antibody



CAB0761

Product Information

Size:

20uL, 50uL, 100uL, 200uL

Observed MW:

115-125kDa

Calculated MW:

35kDa/40kDa

Applications:

WB IHC IF

Reactivity:

Human, Rat

Protein Background

The protein encoded by this gene may play a role in the attachment of stem cells to the bone marrow extracellular matrix or to stromal cells. This single-pass membrane protein is highly glycosylated and phosphorylated by protein kinase C. Two transcript variants encoding different isoforms have been found for this gene.

Immunogen information

Gene ID:

947

Uniprot

P28906

Synonyms:

CD34; CD34 molecule; GIG3; MORT1

Antibody Information

Recommended dilutions:

WB 1:500 - 1:2000 IHC 1:50
- 1:200 IF 1:50 - 1:200

Source:

Rabbit

Isotype:

IgG

Purification:

Affinity purification

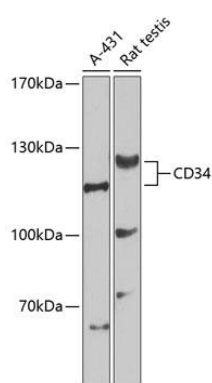
Immunogen:

Recombinant fusion protein containing a sequence corresponding to amino acids 32-290 of human CD34 (NP_001020280.1).

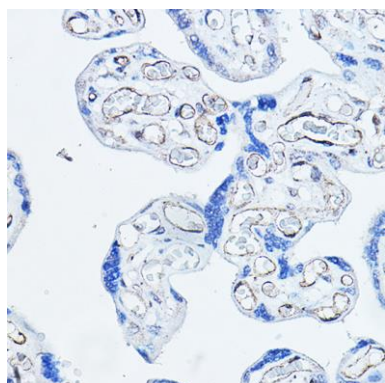
Storage:

Store at -20°C. Avoid freeze / thaw cycles. Buffer: PBS with 0.02% sodium azide, 50% glycerol, pH7.3.

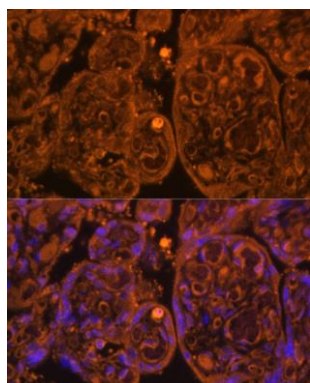
Product Images



Western blot analysis of extracts of various cell lines, using CD34 Antibody (CAB0761) at 1:1000 dilution. Secondary antibody: HRP Goat Anti-Rabbit IgG (H+L) (CABS014) at 1:10000 dilution. Lysates/proteins: 25ug per lane. Blocking buffer: 3% nonfat dry milk in TBST. Detection: ECL Basic Kit (CABM00020). Exposure time: 90s.



Immunohistochemistry of paraffin-embedded human placenta using CD34 Rabbit pAb (CAB0761) at dilution of 1:100 (40x lens).



Immunofluorescence analysis of human placenta using CD34 antibody (CAB0761) at dilution of 1:100. Blue: DAPI for nuclear staining.