

# CALB1 Rabbit Polyclonal Antibody



CAB0802

---

## Product Information

### Size:

20uL, 50uL, 100uL, 200uL

### Observed MW:

30kDa

### Calculated MW:

23kDa/30kDa

### Applications:

WB IHC

### Reactivity:

Human, Mouse, Rat

## Antibody Information

### Recommended dilutions:

WB 1:500 - 1:2000 IHC 1:50  
- 1:100

### Source:

Rabbit

### Isotype:

IgG

### Purification:

Affinity purification

## Protein Background

The protein encoded by this gene is a member of the calcium-binding protein superfamily that includes calmodulin and troponin C. Originally described as a 27 kDa protein, it is now known to be a 28 kDa protein. It contains four active calcium-binding domains, and has two modified domains that are thought to have lost their calcium binding capability. This protein is thought to buffer entry of calcium upon stimulation of glutamate receptors. Depletion of this protein was noted in patients with Huntington disease.

## Immunogen information

### Gene ID:

793

### Uniprot

P05937

### Synonyms:

CALB1; CALB; D-28K; calbindin; Calbindin

### Immunogen:

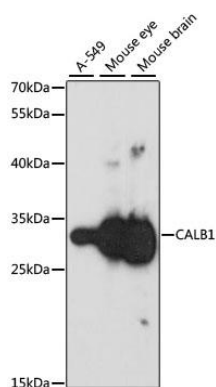
Recombinant fusion protein containing a sequence corresponding to amino acids 1-261 of human CALB1 (NP\_004920.1).

### Storage:

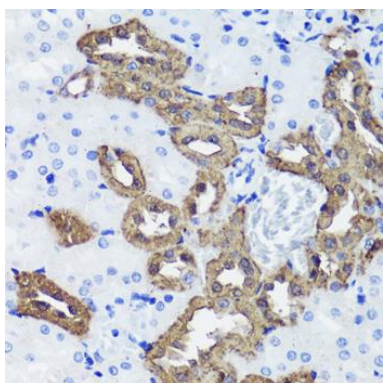
Store at -20°C. Avoid freeze / thaw cycles. Buffer: PBS with 0.02% sodium azide, 50% glycerol, pH7.3.

## Product Images

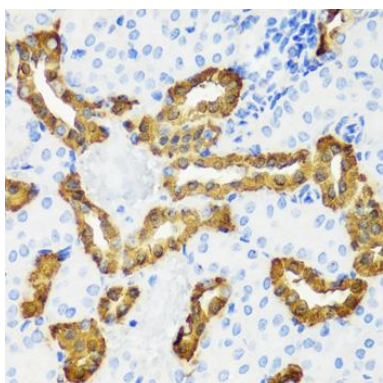
---



Western blot analysis of extracts of various cell lines, using CALB1 antibody (CAB0802) at 1:1000 dilution. Secondary antibody: HRP Goat Anti-Rabbit IgG (H+L) (CABS014) at 1:10000 dilution. Lysates/proteins: 25ug per lane. Blocking buffer: 3% nonfat dry milk in TBST. Detection: ECL Basic Kit (CABM00020). Exposure time: 30s.



Immunohistochemistry of paraffin-embedded rat kidney using CALB1 antibody (CAB0802) at dilution of 1:100 (40x lens).



Immunohistochemistry of paraffin-embedded mouse kidney using CALB1 antibody (CAB0802) at dilution of 1:100 (40x lens).