

# PTCH1 Rabbit Polyclonal Antibody



CAB0826

## Product Information

### Size:

20uL, 50uL, 100uL, 200uL

### Observed MW:

160kDa

### Calculated MW:

144kDa/153kDa/160kDa/161kDa

### Applications:

WB IHC IF

### Reactivity:

Human, Mouse, Rat

## Protein Background

This gene encodes a member of the patched gene family. The encoded protein is the receptor for sonic hedgehog, a secreted molecule implicated in the formation of embryonic structures and in tumorigenesis, as well as the desert hedgehog and indian hedgehog proteins. This gene functions as a tumor suppressor. Mutations of this gene have been associated with basal cell nevus syndrome, esophageal squamous cell carcinoma, trichoepitheliomas, transitional cell carcinomas of the bladder, as well as holoprosencephaly. Alternative splicing results in multiple transcript variants encoding different isoforms. Additional splice variants have been described, but their full length sequences and biological validity cannot be determined currently.

## Immunogen information

### Gene ID:

5727

### Uniprot

Q13635

### Synonyms:

PTCH1; BCNS; HPE7; NBCCS; PTC; PTC1; PTCH; PTCH11; patched 1

## Antibody Information

### Recommended dilutions:

WB 1:500 - 1:1000 IHC 1:50  
- 1:100 IF 1:50 - 1:100

### Source:

Rabbit

### Isotype:

IgG

### Purification:

Affinity purification

### Immunogen:

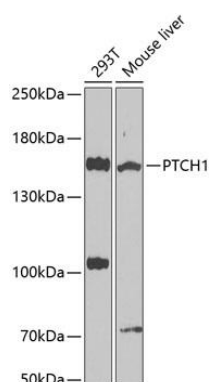
Recombinant fusion protein containing a sequence corresponding to amino acids 1214-1312 of human PTCH1 (NP\_000255.2).

### Storage:

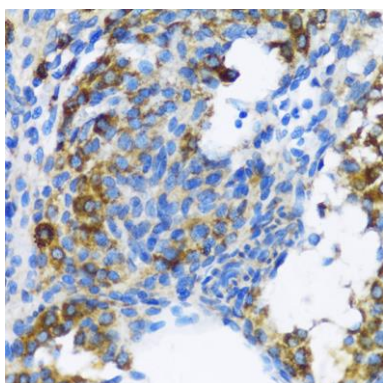
Store at -20°C. Avoid freeze / thaw cycles. Buffer: PBS with 0.02% sodium azide, 50% glycerol, pH7.3.

## Product Images

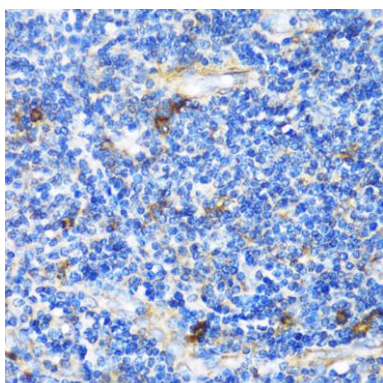
---



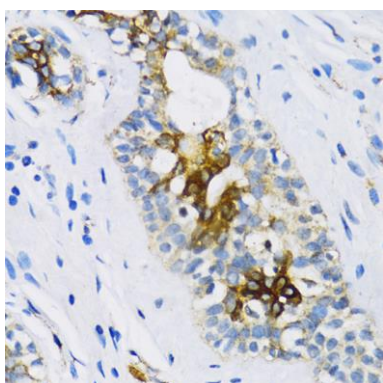
Western blot analysis of extracts of various cell lines, using PTCH1 antibody (CAB0826) at 1:1000 dilution. Secondary antibody: HRP Goat Anti-Rabbit IgG (H+L) (CABS014) at 1:10000 dilution. Lysates/proteins: 25ug per lane. Blocking buffer: 3% nonfat dry milk in TBST. Detection: ECL Basic Kit (CABM00020). Exposure time: 90s.



Immunohistochemistry of paraffin-embedded Rat ovary using PTCH1 antibody (CAB0826) at dilution of 1:100 (40x lens).



Immunohistochemistry of paraffin-embedded Human tonsil using PTCH1 antibody (CAB0826) at dilution of 1:100 (40x lens).



Immunohistochemistry of paraffin-embedded Human breast using PTCH1 antibody (CAB0826) at dilution of 1:100 (40x lens).