

# SCARB1 Rabbit Monoclonal Antibody



CAB0827

---

## Product Information

### Size:

20uL, 50uL, 100uL, 200uL

### Observed MW:

80KDa

### Calculated MW:

80kDa

### Applications:

WB IHC

### Reactivity:

Human, Mouse, Rat

## Protein Background

The protein encoded by this gene is a plasma membrane receptor for high density lipoprotein cholesterol (HDL). The encoded protein mediates cholesterol transfer to and from HDL. In addition, this protein is a receptor for hepatitis C virus glycoprotein E2. Two transcript variants encoding different isoforms have been found for this gene.[provided by RefSeq, Mar 2011]

## Immunogen information

### Gene ID:

949

### Uniprot

Q8WTV0

### Synonyms:

CD36L1; CLA-1; CLA1; HDLQTL6; SR-BI; SRB1

## Antibody Information

### Recommended dilutions:

WB 1:500 - 1:2000 IHC 1:50  
- 1:200

### Source:

Rabbit

### Isotype:

IgG

### Purification:

Affinity purification

### Immunogen:

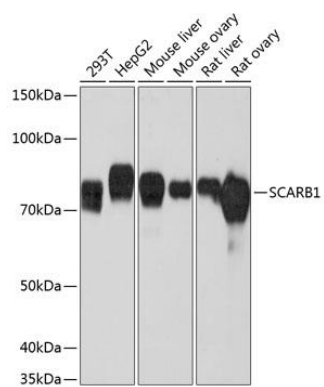
A synthesized peptide derived from human SCARB1

### Storage:

Store at -20°C. Avoid freeze / thaw cycles. Buffer: PBS with 0.02% sodium azide, 0.05% BSA, 50% glycerol, pH7.3.

## Product Images

---



Western blot - SCARB1 Rabbit mAb (CAB0827)