

IGF1 Rabbit Monoclonal Antibody



CAB0830

Product Information

Size:

20uL, 50uL, 100uL, 200uL

Observed MW:

13KDa

Calculated MW:

10kDa

Applications:

WB IHC

Reactivity:

Human, Mouse, Rat

Antibody Information

Recommended dilutions:

WB 1:500 - 1:2000 IHC 1:50 - 1:200

Source:

Rabbit

Isotype:

IgG

Purification:

Affinity purification

Protein Background

The protein encoded by this gene is similar to insulin in function and structure and is a member of a family of proteins involved in mediating growth and development. The encoded protein is processed from a precursor, bound by a specific receptor, and secreted. Defects in this gene are a cause of insulin-like growth factor I deficiency. Alternative splicing results in multiple transcript variants encoding different isoforms that may undergo similar processing to generate mature protein. [provided by RefSeq, Sep 2015]

Immunogen information

Gene ID:

3479

Uniprot

P05019

Synonyms:

IGF-I; IGFI; MGF

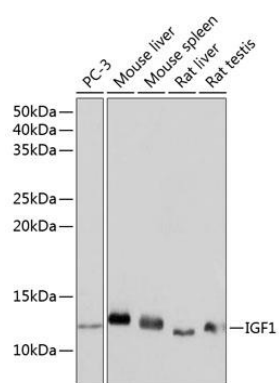
Immunogen:

A synthesized peptide derived from human IGF1

Storage:

Store at -20°C. Avoid freeze / thaw cycles. Buffer: PBS with 0.02% sodium azide, 0.05% BSA, 50% glycerol, pH7.3.

Product Images



Western blot - IGF1 Rabbit mAb (CAB0830)