

clAP2 Rabbit Polyclonal Antibody



CAB0833

Product Information

Size:

20uL, 50uL, 100uL, 200uL

Observed MW:

75KDa

Calculated MW:

68kDa

Applications:

WB IHC IF

Reactivity:

Human, Mouse, Rat

Antibody Information

Recommended dilutions:

WB 1:200 - 1:2000 IHC 1:50
- 1:200 IF 1:50 - 1:200

Source:

Rabbit

Isotype:

IgG

Purification:

Affinity purification

Protein Background

This gene encodes a member of the IAP family of proteins that inhibit apoptosis by binding to tumor necrosis factor receptor-associated factors TRAF1 and TRAF2, probably by interfering with activation of ICE-like proteases. The encoded protein inhibits apoptosis induced by serum deprivation but does not affect apoptosis resulting from exposure to menadione, a potent inducer of free radicals. It contains 3 baculovirus IAP repeats and a ring finger domain. Transcript variants encoding the same isoform have been identified.

Immunogen information

Gene ID:

330

Uniprot

Q13489

Synonyms:

BIRC3; AIP1; API2; CIAP2; HAIP1; HIAP1; MALT2; MIHC; RNF49; c-IAP2

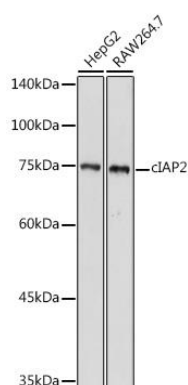
Immunogen:

Recombinant fusion protein containing a sequence corresponding to amino acids 1-180 of human clAP2 (NP_001156.1).

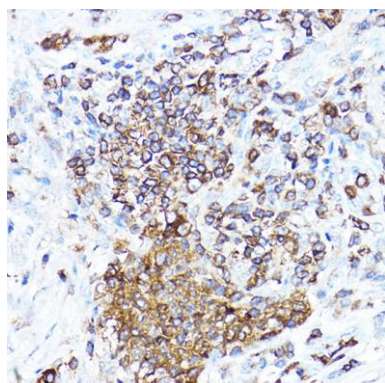
Storage:

Store at -20°C. Avoid freeze / thaw cycles. Buffer: PBS with 0.02% sodium azide, 50% glycerol, pH7.3.

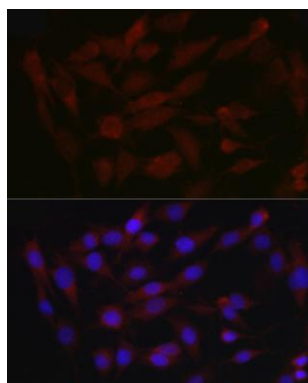
Product Images



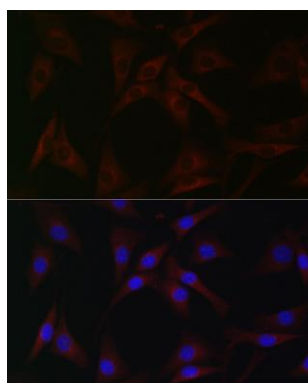
Western blot analysis of extracts of various cell lines, using cIAP2 antibody (CAB0833) at 1:500 dilution. Secondary antibody: HRP Goat Anti-Rabbit IgG (H+L) (CABS014) at 1:10000 dilution. Lysates/proteins: 25ug per lane. Blocking buffer: 3% nonfat dry milk in TBST. Detection: ECL Basic Kit (CABM00020). Exposure time: 180s.



Immunohistochemistry of paraffin-embedded human colon carcinoma using cIAP2 Rabbit pAb (CAB0833) at dilution of 1:50 (40x lens).



Immunofluorescence analysis of C6 cells using cIAP2 Rabbit pAb (CAB0833) at dilution of 1:50 (40x lens). Blue: DAPI for nuclear staining.



Immunofluorescence analysis of NIH-3T3 cells using cIAP2 Rabbit pAb (CAB0833) at dilution of 1:50 (40x lens). Blue: DAPI for nuclear staining.