

RPA1 Rabbit Polyclonal Antibody



CAB0874

Product Information

Size:

20uL, 50uL, 100uL, 200uL

Observed MW:

70kDa

Calculated MW:

68kDa

Applications:

WB IHC

Reactivity:

Human

Antibody Information

Recommended dilutions:

WB 1:500 - 1:2000 IHC 1:50
- 1:100

Source:

Rabbit

Isotype:

IgG

Purification:

Affinity purification

Protein Background

Immunogen information

Gene ID:

6117

Uniprot

P27694

Synonyms:

RPA1; HSSB; MST075; REPA1; RF-A; RP-A; RPA70

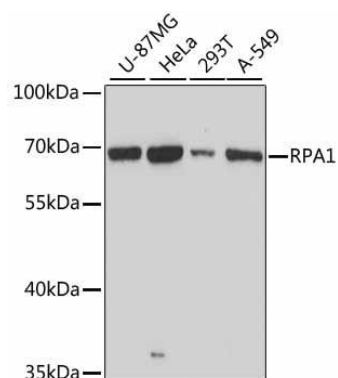
Immunogen:

Recombinant fusion protein containing a sequence corresponding to amino acids 1-240 of human RPA1 (NP_002936.1).

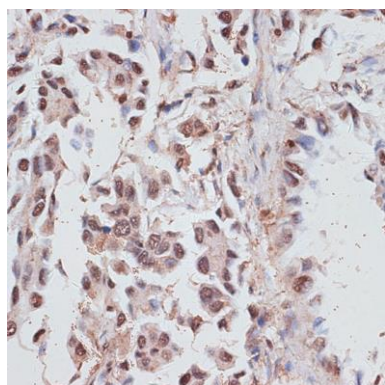
Storage:

Store at -20°C. Avoid freeze / thaw cycles. Buffer: PBS with 0.02% sodium azide, 50% glycerol, pH7.3.

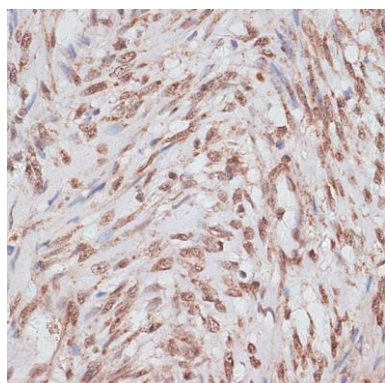
Product Images



Western blot analysis of extracts of various cell lines, using RPA1 antibody (CAB0874) at 1:3000 dilution. Secondary antibody: HRP Goat Anti-Rabbit IgG (H+L) (CABS014) at 1:10000 dilution. Lysates/proteins: 25ug per lane. Blocking buffer: 3% nonfat dry milk in TBST. Detection: ECL Basic Kit (CABM00020). Exposure time: 30s.



Immunohistochemistry of paraffin-embedded human lung cancer using RPA1 antibody (CAB0874) at dilution of 1:100 (40x lens).



Immunohistochemistry of paraffin-embedded human uterus using RPA1 antibody (CAB0874) at dilution of 1:100 (40x lens).