

# [KO Validated] SMARCA4 Rabbit Polyclonal Antibody

CAB0887



## Product Information

### Size:

20uL, 50uL, 100uL, 200uL

### Observed MW:

180kDa

### Calculated MW:

181kDa/184kDa

### Applications:

WB IHC IF

### Reactivity:

Human

## Protein Background

The protein encoded by this gene is a member of the SWI/SNF family of proteins and is similar to the brahma protein of *Drosophila*. Members of this family have helicase and ATPase activities and are thought to regulate transcription of certain genes by altering the chromatin structure around those genes. The encoded protein is part of the large ATP-dependent chromatin remodeling complex SNF/SWI, which is required for transcriptional activation of genes normally repressed by chromatin. In addition, this protein can bind BRCA1, as well as regulate the expression of the tumorigenic protein CD44. Mutations in this gene cause rhabdoid tumor predisposition syndrome type 2. Multiple transcript variants encoding different isoforms have been found for this gene.

## Immunogen information

### Gene ID:

6597

### Uniprot

P51532

## Antibody Information

### Recommended dilutions:

WB 1:500 - 1:2000 IHC 1:50  
- 1:100 IF 1:20 - 1:50

### Source:

Rabbit

### Isotype:

IgG

### Purification:

Affinity purification

### Synonyms:

BAF190; BAF190A; BRG1; CSS4; MRD16; RTPS2; SNF2; SNF2L4;  
SNF2LB; SWI2; hSNF2b; SMARCA4

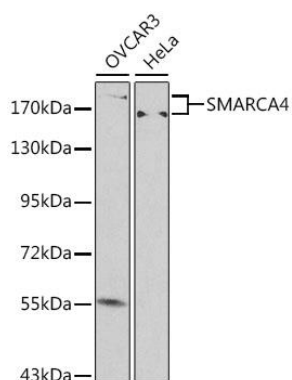
### Immunogen:

A synthetic peptide corresponding to a sequence within amino acids 30-130 of human SMARCA4 (NP\_003063.2).

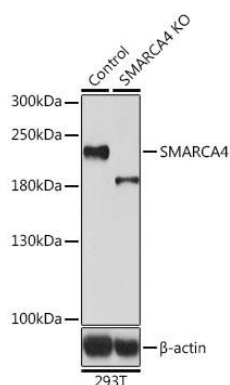
### Storage:

Store at -20°C. Avoid freeze / thaw cycles. Buffer: PBS with 0.02% sodium azide, 50% glycerol, pH7.3.

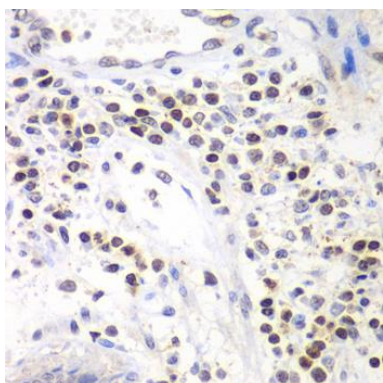
## Product Images



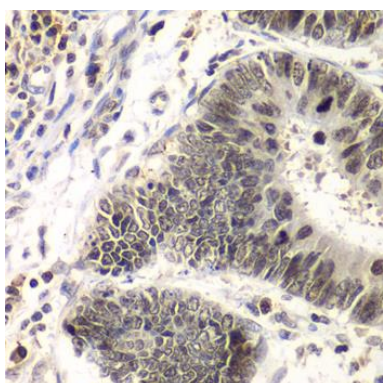
Western blot analysis of extracts of various cell lines, using SMARCA4 antibody (CAB0887) at 1:500 dilution. Secondary antibody: HRP Goat Anti-Rabbit IgG (H+L) (CABS014) at 1:10000 dilution. Lysates/proteins: 25ug per lane. Blocking buffer: 3% nonfat dry milk in TBST.



Western blot analysis of extracts from normal (control) and SMARCA4 knockout (KO) 293T cells, using SMARCA4 antibody (CAB0887) at 1:500 dilution. Secondary antibody: HRP Goat Anti-Rabbit IgG (H+L) (CABS014) at 1:10000 dilution. Lysates/proteins: 25ug per lane. Blocking buffer: 3% nonfat dry milk in TBST. Detection: ECL Basic Kit (CABM00020). Exposure time: 90s.



Immunohistochemistry of paraffin-embedded human colon using SMARCA4 antibody (CAB0887) at dilution of 1:100 (40x lens).



Immunohistochemistry of paraffin-embedded human colon carcinoma using SMARCA4 antibody (CAB0887) at dilution of 1:100 (40x lens).