

ILK Rabbit Polyclonal Antibody



CAB0901

Product Information

Size:

20uL, 50uL, 100uL, 200uL

Observed MW:

48kDa

Calculated MW:

36kDa/44kDa/51kDa

Applications:

WB IHC

Reactivity:

Human, Mouse, Rat

Antibody Information

Recommended dilutions:

WB 1:500 - 1:1000 IHC 1:50
- 1:100

Source:

Rabbit

Isotype:

IgG

Purification:

Affinity purification

Protein Background

This gene encodes a protein with a kinase-like domain and four ankyrin-like repeats. The encoded protein associates at the cell membrane with the cytoplasmic domain of beta integrins, where it regulates integrin-mediated signal transduction. Activity of this protein is important in the epithelial to mesenchymal transition, and over-expression of this gene is implicated in tumor growth and metastasis. Alternative splicing results in multiple transcript variants.

Immunogen information

Gene ID:

3611

Uniprot

Q13418

Synonyms:

ILK; HEL-S-28; ILK-1; ILK-2; P59; p59ILK

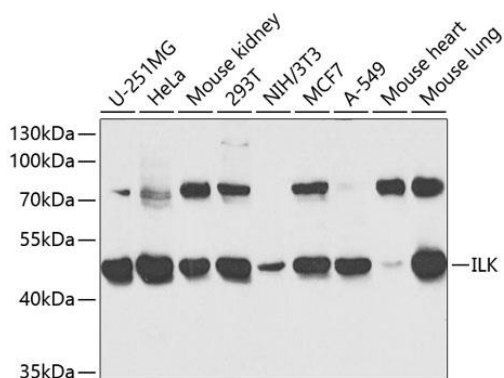
Immunogen:

Recombinant fusion protein containing a sequence corresponding to amino acids 1-260 of human ILK (NP_001014795.1).

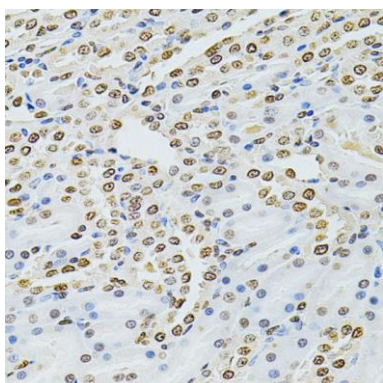
Storage:

Store at -20°C. Avoid freeze / thaw cycles. Buffer: PBS with 0.02% sodium azide, 50% glycerol, pH7.3.

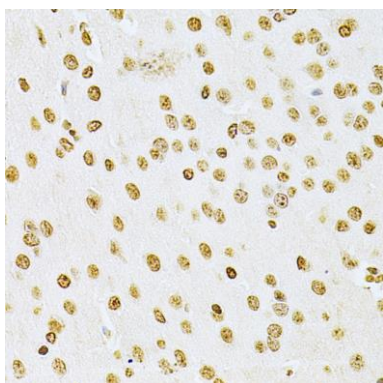
Product Images



Western blot analysis of extracts of various cell lines, using ILK antibody (CAB0901) at 1:1000 dilution. Secondary antibody: HRP Goat Anti-Rabbit IgG (H+L) (CABS014) at 1:10000 dilution. Lysates/proteins: 25ug per lane. Blocking buffer: 3% nonfat dry milk in TBST.



Immunohistochemistry of paraffin-embedded rat kidney using ILK Antibody (CAB0901) at dilution of 1:200 (40x lens).



Immunohistochemistry of paraffin-embedded mouse brain using ILK Antibody (CAB0901) at dilution of 1:200 (40x lens).