

# SLC1A2 Rabbit Polyclonal Antibody



CAB0910

## Product Information

### Size:

20uL, 50uL, 100uL, 200uL

### Observed MW:

65kDa

### Calculated MW:

61kDa/62kDa

### Applications:

WB IHC

### Reactivity:

Human, Mouse, Rat

## Protein Background

This gene encodes a member of a family of solute transporter proteins. The membrane-bound protein is the principal transporter that clears the excitatory neurotransmitter glutamate from the extracellular space at synapses in the central nervous system. Glutamate clearance is necessary for proper synaptic activation and to prevent neuronal damage from excessive activation of glutamate receptors. Improper regulation of this gene is thought to be associated with several neurological disorders. Alternatively spliced transcript variants of this gene have been identified.

## Immunogen information

### Gene ID:

6506

### Uniprot

P43004

### Synonyms:

SLC1A2; EAAT2; EIEE41; GLT-1; HBGT

## Antibody Information

### Recommended dilutions:

WB 1:500 - 1:5000 IHC

1:100 - 1:200

### Source:

Rabbit

### Isotype:

IgG

### Purification:

Affinity purification

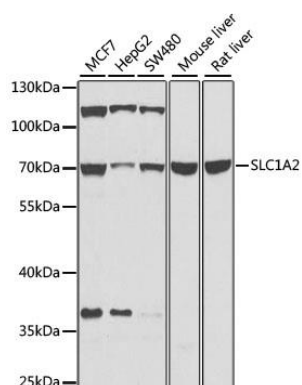
### Immunogen:

Recombinant fusion protein containing a sequence corresponding to amino acids 495-574 of human SLC1A2 (NP\_004162.2).

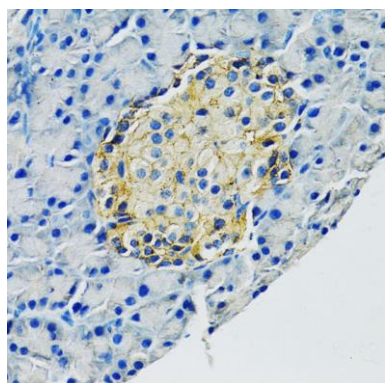
### Storage:

Store at -20°C. Avoid freeze / thaw cycles. Buffer: PBS with 0.02% sodium azide, 50% glycerol, pH7.3.

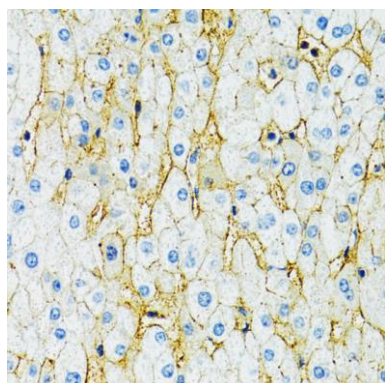
## Product Images



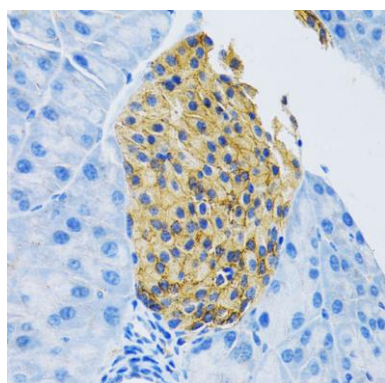
Western blot analysis of extracts of various cell lines, using SLC1A2 antibody (CAB0910) at 1:1000 dilution. Secondary antibody: HRP Goat Anti-Rabbit IgG (H+L) (CABS014) at 1:10000 dilution. Lysates/proteins: 25ug per lane. Blocking buffer: 3% nonfat dry milk in TBST. Detection: ECL Basic Kit (CABM00020). Exposure time: 15s.



Immunohistochemistry of paraffin-embedded rat pancreas using SLC1A2 antibody (CAB0910) at dilution of 1:100 (40x lens).



Immunohistochemistry of paraffin-embedded human liver using SLC1A2 antibody (CAB0910) at dilution of 1:100 (40x lens).



Immunohistochemistry of paraffin-embedded mouse pancreas using SLC1A2 antibody (CAB0910) at dilution of 1:100 (40x lens).