

IKKGamma Rabbit Polyclonal Antibody



CAB0917

Product Information

Size:

20uL, 50uL, 100uL, 200uL

Observed MW:

48kDa

Calculated MW:

36kDa/48kDa/55kDa

Applications:

WB IHC IF

Reactivity:

Human, Mouse, Rat

Antibody Information

Recommended dilutions:

WB 1:500 - 1:2000 IHC 1:50
- 1:100 IF 1:50 - 1:200

Source:

Rabbit

Isotype:

IgG

Purification:

Affinity purification

Protein Background

This gene encodes the regulatory subunit of the inhibitor of kappaB kinase (IKK) complex, which activates NF-kappaB resulting in activation of genes involved in inflammation, immunity, cell survival, and other pathways. Mutations in this gene result in incontinentia pigmenti, hypohidrotic ectodermal dysplasia, and several other types of immunodeficiencies. A pseudogene highly similar to this locus is located in an adjacent region of the X chromosome.

Immunogen information

Gene ID:

8517

Uniprot

Q9Y6K9

Synonyms:

IKBK; AMCBX1; FIP-3; FIP3; Fip3p; IKK-gamma; IKKAP1; IKKG;
IMD33; IP; IP1; IP2; IPD2; NEMO; ZC2HC9

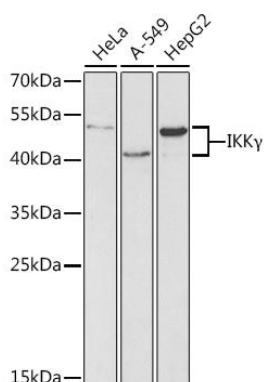
Immunogen:

Recombinant fusion protein containing a sequence corresponding to amino acids 1-419 of human IKKGamma (NP_003630.1).

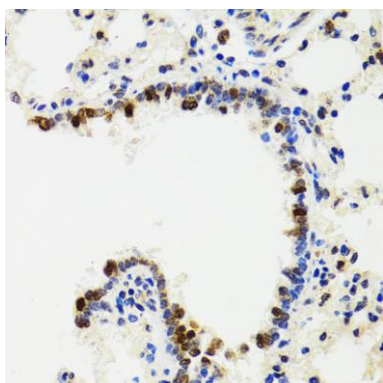
Storage:

Store at -20°C. Avoid freeze / thaw cycles. Buffer: PBS with 0.02% sodium azide, 50% glycerol, pH7.3.

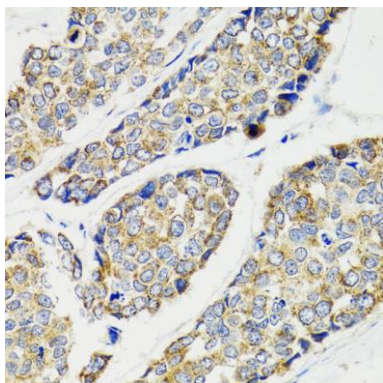
Product Images



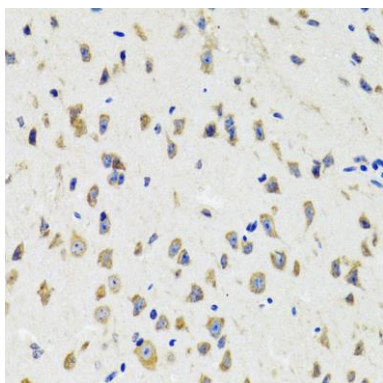
Western blot analysis of extracts of various cell lines, using IKKgamma antibody (CAB0917) at 1:1000 dilution. Secondary antibody: HRP Goat Anti-Rabbit IgG (H+L) (CABS014) at 1:10000 dilution. Lysates/proteins: 25ug per lane. Blocking buffer: 3% nonfat dry milk in TBST.



Immunohistochemistry of paraffin-embedded rat lung using IKKgamma antibody (CAB0917) at dilution of 1:100 (40x lens).



Immunohistochemistry of paraffin-embedded human esophageal cancer using IKKgamma antibody (CAB0917) at dilution of 1:100 (40x lens).



Immunohistochemistry of paraffin-embedded mouse brain using IKKgamma antibody (CAB0917) at dilution of 1:100 (40x lens).