

Hes1 Rabbit Monoclonal Antibody



CAB0925

Product Information

Size:

20uL, 50uL, 100uL, 200uL

Observed MW:

30KDa

Calculated MW:

30kDa

Applications:

WB IHC

Reactivity:

Mouse, Rat

Protein Background

This protein belongs to the basic helix-loop-helix family of transcription factors. It is a transcriptional repressor of genes that require a bHLH protein for their transcription. The protein has a particular type of basic domain that contains a helix interrupting protein that binds to the N-box rather than the canonical E-box. [provided by RefSeq, Jul 2008]

Immunogen information

Gene ID:

3280

Uniprot

Q14469

Synonyms:

HES-1; HHL; HRY; bHLHb39

Antibody Information

Recommended dilutions:

WB 1:500 - 1:2000 IHC 1:50
- 1:200

Source:

Rabbit

Isotype:

IgG

Purification:

Affinity purification

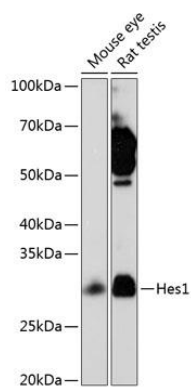
Immunogen:

A synthesized peptide derived from human Hes1

Storage:

Store at -20°C. Avoid freeze / thaw cycles. Buffer: PBS with 0.02% sodium azide, 0.05% BSA, 50% glycerol, pH7.3.

Product Images



Western blot - Hes1 Rabbit mAb (CAB0925)