

# NOTCH3 Rabbit Polyclonal Antibody



CAB0929

## Product Information

### Size:

20uL, 50uL, 100uL, 200uL

### Observed MW:

Refer to figures

### Calculated MW:

243kDa

### Applications:

WB IF

### Reactivity:

Mouse, Rat

## Antibody Information

### Recommended dilutions:

WB 1:500 - 1:2000 IF 1:50 - 1:200

### Source:

Rabbit

### Isotype:

IgG

### Purification:

Affinity purification

## Protein Background

This gene encodes the third discovered human homologue of the *Drosophila melanogaster* type I membrane protein notch. In *Drosophila*, notch interaction with its cell-bound ligands (delta, serrate) establishes an intercellular signalling pathway that plays a key role in neural development. Homologues of the notch-ligands have also been identified in human, but precise interactions between these ligands and the human notch homologues remains to be determined. Mutations in NOTCH3 have been identified as the underlying cause of cerebral autosomal dominant arteriopathy with subcortical infarcts and leukoencephalopathy (CADASIL).

## Immunogen information

### Gene ID:

4854

### Uniprot

Q9UM47

### Synonyms:

NOTCH3; CADASIL; CADASIL1; CASIL; IMF2; LMNS; notch 3

### Immunogen:

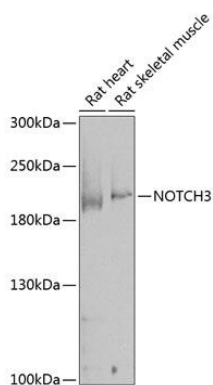
Recombinant fusion protein containing a sequence corresponding to amino acids 751-850 of human NOTCH3 (NP\_000426.2).

### Storage:

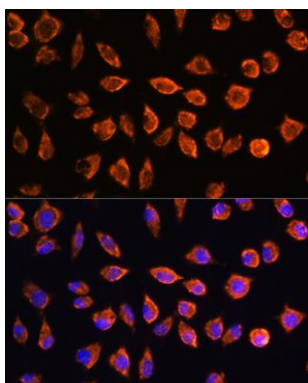
Store at -20°C. Avoid freeze / thaw cycles. Buffer: PBS with 0.02% sodium azide, 50% glycerol, pH7.3.

## Product Images

---



Western blot analysis of extracts of various cell lines, using NOTCH3 antibody (CAB0929) at 1:1000 dilution. Secondary antibody: HRP Goat Anti-Rabbit IgG (H+L) (CABS014) at 1:10000 dilution. Lysates/proteins: 25ug per lane. Blocking buffer: 3% nonfat dry milk in TBST. Detection: ECL Enhanced Kit (CABM00021). Exposure time: 15s.



Immunofluorescence analysis of L929 cells using NOTCH3 Rabbit pAb (CAB0929) at dilution of 1:100. Blue: DAPI for nuclear staining.