

ERBB3 Rabbit Polyclonal Antibody



CAB0950

Product Information

Size:

20uL, 50uL, 100uL, 200uL

Observed MW:

200kDa

Calculated MW:

20kDa/36kDa/77kDa/141kDa
/148kDa

Applications:

WB

Reactivity:

Human, Mouse, Rat

Antibody Information

Recommended dilutions:

WB 1:500 - 1:2000

Source:

Rabbit

Isotype:

IgG

Purification:

Affinity purification

Protein Background

This gene encodes a member of the epidermal growth factor receptor (EGFR) family of receptor tyrosine kinases. This membrane-bound protein has a neuregulin binding domain but not an active kinase domain. It therefore can bind this ligand but not convey the signal into the cell through protein phosphorylation. However, it does form heterodimers with other EGF receptor family members which do have kinase activity. Heterodimerization leads to the activation of pathways which lead to cell proliferation or differentiation. Amplification of this gene and/or overexpression of its protein have been reported in numerous cancers, including prostate, bladder, and breast tumors. Alternate transcriptional splice variants encoding different isoforms have been characterized. One isoform lacks the intermembrane region and is secreted outside the cell. This form acts to modulate the activity of the membrane-bound form. Additional splice variants have also been reported, but they have not been thoroughly characterized.

Immunogen information

Gene ID:

2065

Uniprot

P21860

Synonyms:

ERBB3; ErbB-3; HER3; LCCS2; MDA-BF-1; c-erbB-3; c-erbB3; erbB3-S; p180-ErbB3; p45-sErbB3; p85-sErbB3

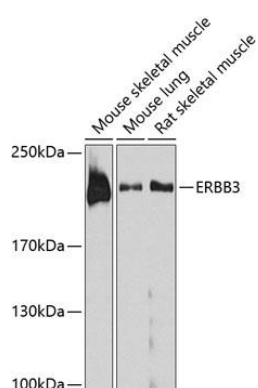
Immunogen:

Recombinant fusion protein containing a sequence corresponding to amino acids 20-285 of human ERBB3 (NP_001973.2).

Storage:

Store at -20°C. Avoid freeze / thaw cycles. Buffer: PBS with 0.02% sodium azide, 50% glycerol, pH7.3.

Product Images



Western blot analysis of extracts of various cell lines, using ERBB3 antibody (CAB0950) at 1:1000 dilution. Secondary antibody: HRP Goat Anti-Rabbit IgG (H+L) (CABS014) at 1:10000 dilution. Lysates/proteins: 25ug per lane. Blocking buffer: 3% nonfat dry milk in TBST. Detection: ECL Basic Kit (CABM00020). Exposure time: 90s.