

# PPP3R1 Rabbit Polyclonal Antibody



CAB0954

## Product Information

### Size:

20uL, 50uL, 100uL, 200uL

### Observed MW:

15kDa

### Calculated MW:

19kDa

### Applications:

WB IHC IF

### Reactivity:

Human, Mouse, Rat

## Antibody Information

### Recommended dilutions:

WB 1:500 - 1:2000 IHC 1:50  
- 1:100 IF 1:50 - 1:200

### Source:

Rabbit

### Isotype:

IgG

### Purification:

Affinity purification

## Protein Background

### Immunogen information

#### Gene ID:

5534

#### Uniprot

P63098

#### Synonyms:

PPP3R1; CALNB1; CNB; CNB1

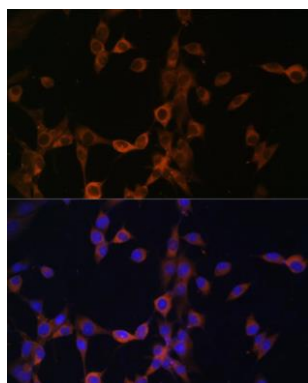
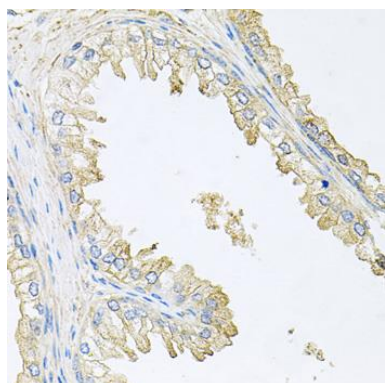
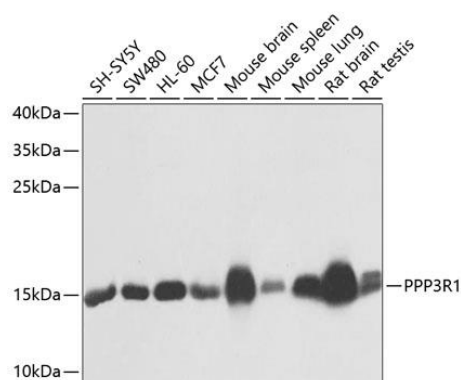
#### Immunogen:

Recombinant fusion protein containing a sequence corresponding to amino acids 11-170 of human PPP3R1 (NP\_000936.1).

#### Storage:

Store at -20°C. Avoid freeze / thaw cycles. Buffer: PBS with 0.02% sodium azide, 50% glycerol, pH7.3.

## Product Images



Western blot analysis of extracts of various cell lines, using PPP3R1 antibody (CAB0954) at 1:1000 dilution. Secondary antibody: HRP Goat Anti-Rabbit IgG (H+L) (CABS014) at 1:10000 dilution. Lysates/proteins: 25ug per lane. Blocking buffer: 3% nonfat dry milk in TBST. Detection: ECL Basic Kit (CABM00020). Exposure time: 1s.

Immunohistochemistry of paraffin-embedded human prostate using PPP3R1 antibody (CAB0954) at dilution of 1:100 (40x lens).

Immunofluorescence analysis of NIH/3T3 cells using PPP3R1 antibody (CAB0954) at dilution of 1:100. Blue: DAPI for nuclear staining.