

# Caspase-1 Rabbit Polyclonal Antibody



CAB0964

---

## Product Information

### Size:

20uL, 50uL, 100uL, 200uL

### Observed MW:

48kDa/20-25kDa

### Calculated MW:

10kDa/29kDa/35kDa/42kDa/  
45kDa

### Applications:

WB IHC IF IP

### Reactivity:

Human, Mouse, Rat

## Protein Background

This gene encodes a protein which is a member of the cysteine-aspartic acid protease (caspase) family. Sequential activation of caspases plays a central role in the execution-phase of cell apoptosis. Caspases exist as inactive proenzymes which undergo proteolytic processing at conserved aspartic residues to produce 2 subunits, large and small, that dimerize to form the active enzyme. This gene was identified by its ability to proteolytically cleave and activate the inactive precursor of interleukin-1, a cytokine involved in the processes such as inflammation, septic shock, and wound healing. This gene has been shown to induce cell apoptosis and may function in various developmental stages. Studies of a similar gene in mouse suggest a role in the pathogenesis of Huntington disease. Alternative splicing results in transcript variants encoding distinct isoforms.

## Immunogen information

### Gene ID:

834

### Uniprot

P29466

## Antibody Information

### Recommended dilutions:

WB 1:500 - 1:2000 IHC 1:50  
- 1:200 IF 1:50 - 1:200 IP  
1:50 - 1:100

### Source:

Rabbit

### Isotype:

IgG

### Purification:

Affinity purification

### Synonyms:

CASP1; ICE; IL1BC; P45; caspase-1; Caspase 1

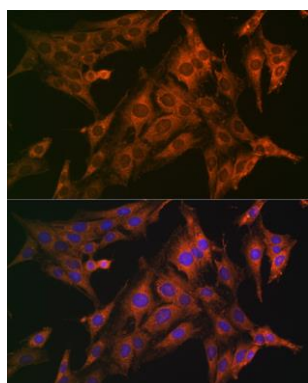
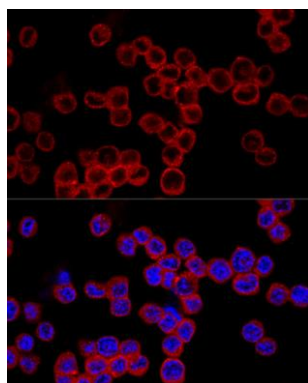
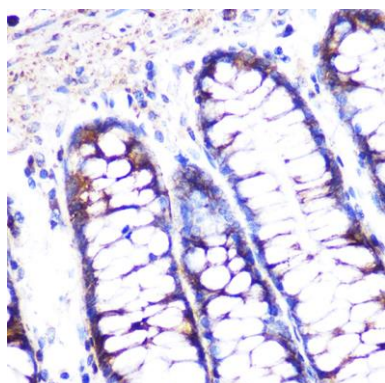
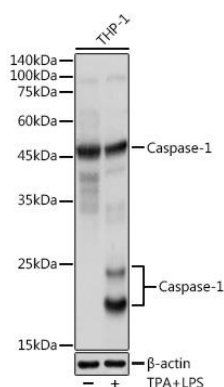
### Immunogen:

Recombinant fusion protein containing a sequence corresponding to amino acids 1-311 of human Caspase-1 (NP\_150635.1).

### Storage:

Store at -20°C. Avoid freeze / thaw cycles. Buffer: PBS with 0.02% sodium azide, 50% glycerol, pH7.3.

## Product Images



Western blot analysis of extracts of THP-1 cells, using Caspase-1 antibody (CAB0964) at 1:1000 dilution. THP-1 cells were treated by PMA/TPA (80 nM) at 37°C for overnight and LPS (1 ug/mL) at 37°C for 6 hours. Secondary antibody: HRP Goat Anti-Rabbit IgG (H+L) (CABS014) at 1:10000 dilution. Lysates/proteins: 25ug per lane. Blocking buffer: 3% nonfat dry milk in TBST. Detection: ECL Basic Kit (CABM00020). Exposure time: 2s.

Immunohistochemistry of paraffin-embedded human colon using Caspase-1 Rabbit pAb (CAB0964) at dilution of 1:100 (40x lens).

Confocal immunofluorescence analysis of Raw264.7 cells using Caspase-1 Polyclonal Antibody (CAB0964) at dilution of 1:200. Blue: DAPI for nuclear staining.

Immunofluorescence analysis of C6 cells using Caspase-1 Rabbit pAb (CAB0964) at dilution of 1:100 (40x lens). Blue: DAPI for nuclear staining.