

# CTSB Rabbit Polyclonal Antibody



CAB0967

---

## Product Information

### Size:

20uL, 50uL, 100uL, 200uL

### Observed MW:

24kDa/27kDa/44kDa

### Calculated MW:

37kDa

### Applications:

WB IHC

### Reactivity:

Human, Mouse, Rat

## Antibody Information

### Recommended dilutions:

WB 1:500 - 1:2000 IHC 1:50  
- 1:200

### Source:

Rabbit

### Isotype:

IgG

### Purification:

Affinity purification

## Protein Background

This gene encodes a member of the C1 family of peptidases. Alternative splicing of this gene results in multiple transcript variants. At least one of these variants encodes a preproprotein that is proteolytically processed to generate multiple protein products. These products include the cathepsin B light and heavy chains, which can dimerize to form the double chain form of the enzyme. This enzyme is a lysosomal cysteine protease with both endopeptidase and exopeptidase activity that may play a role in protein turnover. It is also known as amyloid precursor protein secretase and is involved in the proteolytic processing of amyloid precursor protein (APP). Incomplete proteolytic processing of APP has been suggested to be a causative factor in Alzheimer's disease, the most common cause of dementia. Overexpression of the encoded protein has been associated with esophageal adenocarcinoma and other tumors. Multiple pseudogenes of this gene have been identified.

## Immunogen information

### Gene ID:

1508

### Uniprot

P07858

### Synonyms:

APPS; CPSB; Cathepsin B; CTSB

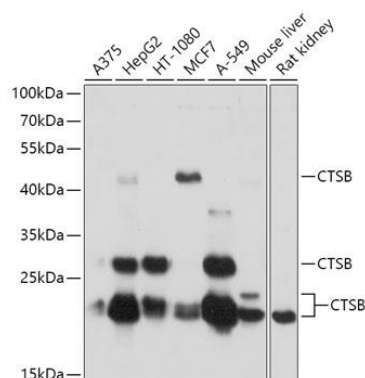
### Immunogen:

Recombinant fusion protein containing a sequence corresponding to amino acids 1-339 of human CTSB (NP\_001899.1).

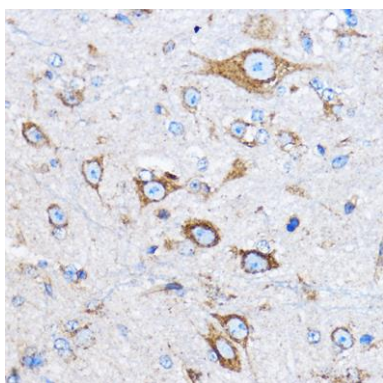
### Storage:

Store at -20°C. Avoid freeze / thaw cycles. Buffer: PBS with 0.02% sodium azide, 50% glycerol, pH7.3.

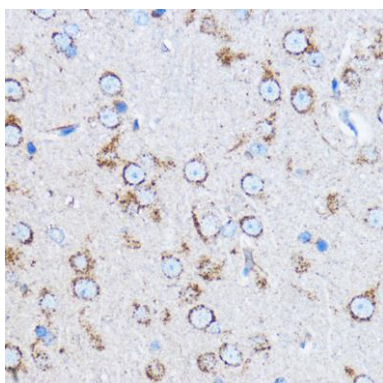
## Product Images



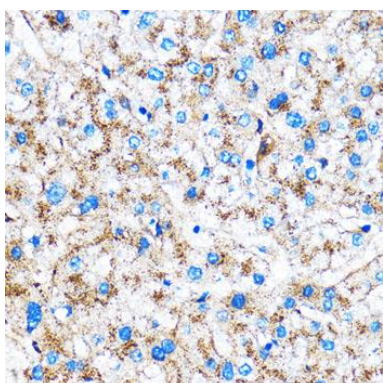
Western blot analysis of extracts of various cell lines, using CTSB antibody (CAB0967) at 1:1000 dilution. Secondary antibody: HRP Goat Anti-Rabbit IgG (H+L) (CABS014) at 1:10000 dilution. Lysates/proteins: 25ug per lane. Blocking buffer: 3% nonfat dry milk in TBST. Detection: ECL Basic Kit (CABM00020). Exposure time: 1s.



Immunohistochemistry of paraffin-embedded Mouse spinal cord using CTSB Rabbit pAb (CAB0967) at dilution of 1:50 (40x lens).



Immunohistochemistry of paraffin-embedded Rat brain using CTSB Rabbit pAb (CAB0967) at dilution of 1:50 (40x lens).



Immunohistochemistry of paraffin-embedded Human liver using CTSB Rabbit pAb (CAB0967) at dilution of 1:50 (40x lens).